



German-Mongolian Institute for Resources and Technology

# Ambient and Outdoor Air Quality Study of Bayankhoshuu Residential district

Bachelor Thesis

Nomuun Batbaatar

Student ID: 14405680471283

Supervisor 1: Dr. Daniel Karthe

Supervisor 2: Prof. Gunther Stehr

Nalaikh, 24<sup>th</sup> of May, 2019

## Abstract

This study was finished in cooperation with the Clean Air-Ger (GLEAR) project, led by Prof. Dr.-Ing Gunther Stehr, therefore data for this study is collected from the pilot area of GLEAR project which is located at the Bayankhoshuu Residential (Ger) district.

This thesis assesses the indoor and outdoor air quality measurements produced by 3 different monitoring devices, DustTrack, Sensedge and online database (OpenAQ), and to reach a scientific evaluation on impacts and effects of ESP using that information.

The main focus of the measurements were fine dusts, the PM<sub>2.5</sub> (atmospheric particulate matter that have diameter of less than 2.5 micrometers) and PM<sub>10</sub> (atmospheric particulate matter that have diameter of less than 10 micrometers) quantity, in  $\mu\text{m}/\text{m}^3$ , which are known as its adverse and dangerous effect on human health due to its size.

The Bayankhoshuu Residential area was chosen as the study area since the district is the most polluted area of Ulaanbaatar, mostly due to high abundance in furnace use as main heating and cooking source for the residents.

Although the common source for the particulate emissions is predicted to be Residential area furnace, suspension of dry dust from open soil surfaces and roads, car and vehicle exhaust are also significant source of ground level particulate matter concentration. [1]

From the collected measurement, effective reduction of particulate matter by ESP can be observed. However further development and studies are needed where the fuel use and other possible activities that trigger dispersion of fine dust into the atmosphere are observed and controlled.

The comparison between ambient and outdoor air quality indicates the pollution reaches its peaks during the active firing periods of the residents of the area, around 6 am and 6 pm.

Keywords: air pollution, air quality, ger district, ambient,

## List of Figures

Figure 1 ESP equipped households at the GLEAR Pilot Area (Source: Google Maps, 2019).....	6
Figure 2 Dirt road at the pilot area .....	6
Figure 3 Average high and low temperature in February and March, 2019 [Source: weatherspark.com] .....	9
Figure 4 Measurement comparison data between DustTrack and Monitoring Station..	10
Figure 5 Measurement comparison data between DustTrack and Monitoring Station..	10

Figure 6 Measurement comparison data between DustTrack and Monitoring Station..	11
Figure 7 Measurement comparison data between DustTrack and Monitoring Station..	11
Figure 8 Measurement comparison data between DustTrack and Monitoring Station..	12
Figure 9 Measurement comparison data between DustTrack and Monitoring Station..	12
Figure 10 Measurement comparison data between DustTrack and Monitoring Station	13
Figure 11 Measurement comparison data between DustTrack and Monitoring Station	13
Figure 12 ppm measurement during replacement of pipe .....	14
Figure 13 ppm measurement inside household during deep frying food.....	14
Figure 14 measurement of burning out fuel .....	15
Figure 15 Ambient and Outdoor data collected from Household No19 .....	15
Figure 16 Ambient and Outdoor data collected from Household No 34 .....	16
Figure 17 Ambient and Outdoor data collected from Household No8.....	16
Figure 18 Ambient and Outdoor data collected from Household No12 .....	17
Figure 19 Measurement comparison data between DustTrack and Monitoring Station	18
Figure 20 Measurement comparison data between DustTrack and Monitoring Station	18
Figure 21 Measurement comparison between Monitoring station and Sensedge .....	19
Figure 22 Measurement comparison between Monitoring station and Sensedge .....	19
Figure 23 Measurement comparison between Monitoring station and Sensedge .....	20
Figure 24 Measurement comparison between Monitoring station and Sensedge .....	20
Figure 25 The comparison between Monitoring station data and sensedge measurements on 2 <sup>nd</sup> of March .....	21
Figure 26 The comparison between Monitoring station data and sensedge measurements on 9 <sup>th</sup> of March.....	21
Figure 27 The comparison between Monitoring station data and sensedge measurements on 9 <sup>th</sup> of March.....	22
Figure 28 The comparison between Monitoring station data and sensedge measurements on 10 <sup>th</sup> of March.....	22
Figure 30 The comparison between Monitoring station data and sensedge measurements on 11 <sup>th</sup> of March .....	23
Figure 31 The comparison between Monitoring station data and sensedge measurements on 12 <sup>th</sup> March.....	23
Figure 32 The comparison between Monitoring station data and sensedge measurements on 13 <sup>th</sup> of March.....	24
Figure 33 The average ambient measurements .....	57

## List of Appendices

### List of Tables

Table 1 Sensedge installation location.....	8
Table 3 DustTrack Measurement location.....	8

## **ACKNOWLEDGEMENTS**

Foremost, I would like to express my sincere gratitude to my supervisors and advisor Prof. Daniel Karthe and Prof. Gunther Stehr for the opportunity, guidance and patience.

My sincere thanks also goes to the Prof. Lodoysamba Sereeter Dr. Ariuntuya and Prof. Gunpilmaa, for your motivation, insightful comments and time.

I would like to thank each and every staff and members of GMIT family who worked very hard in order to make today reality, thanks to which I had the honor to have been part of this unforgettable journey to life.

I thank my peer and friends, for being your honest and reliable self so much so that I could always rely on during hard times.

A very special thanks to my best friend and soul mate, for keeping up with me for all these years and pushing me to my limits so that I can come this far

Last but not least, I would like to thank my family, for your immense love trust and support that gave me enough will power to come this far.

<b>Table of Contents</b>	
Nalaikh, 24 <sup>th</sup> of May, 2019 .....	0
<b>Abstract</b> .....	1
<b>List of Figures</b> .....	1
<b>List of Appendices</b> .....	2
<b>List of Tables</b> .....	2
<b>ACKNOWLEDGEMENTS</b> .....	3
<b>Chapter 1: Introduction</b> .....	5
<b>1.1 Background</b> .....	5
<b>1.2 Objective of the study</b> .....	5
<b>Chapter 2: Study Area</b> .....	5
<b>2.1 Glear Project</b> .....	5
<b>2.2 Study area background</b> .....	6
<b>Chapter 3: METHODOLOGY</b> .....	7
<b>3.1 Sensedge</b> .....	7
<b>3.2 Dusttrack</b> .....	8
<b>3.3 Monitoring Station</b> .....	8
<b>Chapter 4: RESULTS</b> .....	9
<b>4.2 Indoor Measurements</b> .....	13
Also, in warmer period, from 9 <sup>th</sup> to 14 <sup>th</sup> of March, the PM amount during the stable period of midday is almost within the MNS4585:2016, as compared to the measurements from February where even during midday the particulate amount exceeded the standard by at least 2 folds .....	17
<b>4.3 Indoor and Outdoor measurement comparison</b> .....	17
<b>Chapter 5: Conclusions and Recommendation</b> .....	24
<b>References</b> .....	25

## **Chapter 1: INTRODUCTION**

### **1.1 Background**

As one of the most polluted capital of the World the Ulaanbaatar city of Mongolia has many environmental and health issues which are in dire need of solution. Air pollution is one of the largest causes of the top four non-communicable diseases such as stroke, lung cancer, chronic respiratory disease and heart disease. [2]

For the past 20 years number of different projects and research on reduction of environmental pollution took place in this city, but not many reached positive outcomes.

However, not many of those aforementioned studies focused on the ambient air quality, which could open many new possibilities towards future studies and research in the field.

Baynkhoshuu Ger residential area, the pilot location, is undoubtedly the most polluted area of the UB city, and since the residential area is mostly disconnected from the urban planning, central heating system and power source, the residents mostly live in Ger, a Mongolian traditional yurt, and use furnace as heating source.

One of the possible reasons behind the abundance of pollution in the district could be the overflowing number of residents, the amount of residents living in Ger area, not connected to the central heating system, and the low income of the residents.

### **1.2 Objective of the study**

The main objective of this thesis is to update and improve the knowledge on dust pollution in Baynkhoshuu Ger district area and provide additional data resource to future air quality research in the area, by collecting and evaluating the measurements using air quality monitoring and measurement devices.

Also, in cooperation with GLEAR project, this thesis aims to provide first scientific evaluation of the impact of the electrostatic dust precipitator (ESP) systems on the ambient air both inside and outside human dwellings.

## **Chapter 2: STUDY AREA**

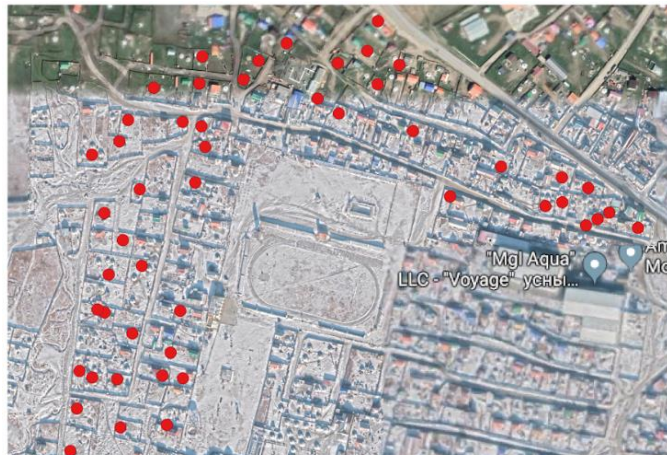
### **2.1 Glear Project**

This thesis is conducted in close cooperation with the Clean Air-Ger (GLEAR) Pilot project funded by GIZ (lead: Prof. Dr.-Ing Gunther Stehr). The main objective of the project is to reduce the dust pollution by collecting the fine particles, which are produced during firing the furnace, inside the stove pipe through electrostatic field.

The GLEAR project used dry EP, where the pollutants are first charged by the electrodes and then collected from the stream of air. This type of ESP does not need liquid and is often used in a thermal power plants, i.e the 4<sup>th</sup> thermal power plant of UB.

During the pilot stage of the project total of 70 households (Figure1) at the Baynkhoshuu Ger district are chosen and equipped with an Electrostatic Dust Precipitator (ESP) designed especially for the Mongolian condition, the overall structure

of Ger and furnace. During the pilot stage, which began in January and closed in April, the efficiency, significance and accessibility are recorded for further development and improvement of the project.



**Figure 1 ESP equipped households at the GLEAR Pilot Area (Source: Google Maps, 2019)**

## 2.2 Study area background

Undoubtedly, the furnace used as heating and cooking system at the Ger residential area is one of the biggest sources of air pollution, frequently due to abundance of ash content of the common fuels. The fine dust generated at these furnaces travel through the stove pipe into the atmosphere, but certain chunk of it settles indoor and decreases the air quality inside the household.

The side roads branching out into the Ger area are mostly dirt roads (Figure 2), which transports fine dust and loose debris into the air with each gust of wind and through the tires of passing cars, proving to be one of the sources of air pollution in the area.

The dry weather of Mongolia and uphill location of the Baynkhoshuu ger district, where wind is more frequency and speed is rather abundant, also factor into the decreasing air quality in the area.

The baseline study done, from the measuring device installed households, during the project period showed the active furnace firing time period to be 6am, 6pm and 12am. However on warmer days, mostly since 1<sup>st</sup> of March, this period scattered into more frequent periods, due to uses of wood pellets rather than coals.



**Figure 2 Dirt road at the pilot area**

In order to reduce the air pollution inside their home, the homeowners carpet the floor, use air humidifiers and put pebbles layer on top of the dirt and loose debris inside their fence.

### **Chapter 3: STATE OF ART**

Swift transition to urbanization since 1990s Ulaanbaatar, the capital city of Mongolia experienced unplanned increase to the pollution, which brought in many different problems that people were not able to foresee.

Due to unforeseen amount of movements into the city, the lack of urban planning has created a ger residential area, where people use furnaces as their heating source due to lack of central heating system in the area, and this residential areas became one of the main sources of air pollution in Mongolia now.

The air pollution sources in Ulaanbaatar include coal burning in gers, industrial boilers, dust emissions of construction, power plants, improved stoves, household heating systems, brick kiln operations, public and private transports, road re-suspension, fly ash re-suspension, and garbage burning. Of these, especially, during winter time, smog of ger districts, motor vehicles and power plants produce a very large amount of air pollutants. Generally, in Ulaanbaatar city, combustion for domestic cooking and heating, motor vehicles and power plants are the main sources of air pollution (Figure 2). Also, the most typical urban pollutants include suspended particulate matter (SPM), sulfur dioxide (SO<sub>2</sub>), volatile organic compounds (VOCs), lead (Pb), carbon monoxide (CO), carbon dioxide (CO<sub>2</sub>), nitrogen oxides (NO<sub>x</sub>) and ozone (O<sub>3</sub>). Of these pollutants, the particulate matter (PM) is one of the most critical pollutants responsible for the largest health and economic damages. Because of the importance of the PM pollution for human health, visibility and the environment, many studies are focused primarily on PM pollution as a target pollutant. [3]

Due to the size and abundance the air polluting particles prove danger to children and elderly. There is consistent evidence that indoor air pollution increases the risk of chronic obstructive pulmonary disease and of acute respiratory infections in childhood, the most important cause of death among children under 5 years of age in developing countries. Evidence also exists of associations with low birth weight, increased infant and perinatal mortality, pulmonary tuberculosis, nasopharyngeal and laryngeal cancer, cataract, and, specifically in respect of the use of coal, with lung cancer. Conflicting evidence exists with regard to asthma. [4]

Since 2017, the increasing number of death and complications to children and embryo has encouraged the people and the government to take much harder and effective stance towards air pollution and its sources, and has since encouraged more projects and research to start. The GLEAR project is one of these projects which are aspiring to find the most suitable solution to this critical problem.

By working in close relation with the GLEAR project this study aims to provide scientific evaluation on the effects ESP on the preexisting air quality conditions as well as improving the knowledge on ambient and outdoor air quality in Ulaanbaatar, Mongolia.

### **Chapter 4: METHODOLOGY**

#### **4.1 Sensedge**

The Sensedge by Kaiterra is an air quality monitoring device capable of measuring the pm<sub>2.5</sub>, CO<sub>2</sub>, temperature as well as humidity continuously during its operation and sends the data to mobile devices through wireless connection.

In order to gain clear outlook on possible impacts on indoor and outdoor air quality by ESP, the location (preferably more than 2 Gers inside the fence) was highly considered for each installed location. Thus the Sensedge was installed in 4 different locations, each with 3 Gers occupying the space inside the fence, which are shown in Table 1:

Household number	Latitude & Longitude (Decimal degrees:WGS84)
19	47.957134, 106.81339
34	47.959533, 106.81349
8	47.958940, 106.82070
12	47.956325, 106.81302

**Table 1 Sensedge installation location**

The device was installed in one location for at least 48 hours, in order to measure air quality with and without ESP operating, and on days which were similar in weather condition.

During the installation period the homeowners were tasked to keep the ESP completely off for 24 hours during the 1<sup>st</sup> day of installation and to strictly keep ESP on, preferably, at all times, through the next 24 hour period

#### **4.2 Dusttrack**

Total of 5 different locations were chosen for the measurements of the DustTrack, as shown in Table 2.

The measurements were taken for 30 minutes continuously on 10 second interval at each location, while the location for Indoor measurements were chosen on random. Preferably, most of the measurements started

Location	Latitude & Longitude (Decimal degrees:WGS84)
School	47.953253, 106.82695
Monitoring Station	47.956191, 106.82514
Street	47.956218, 106.82321
Indoor	N/A
Bus Stop	47.953226, 106.82587

**Table 2 DustTrack Measurement location**

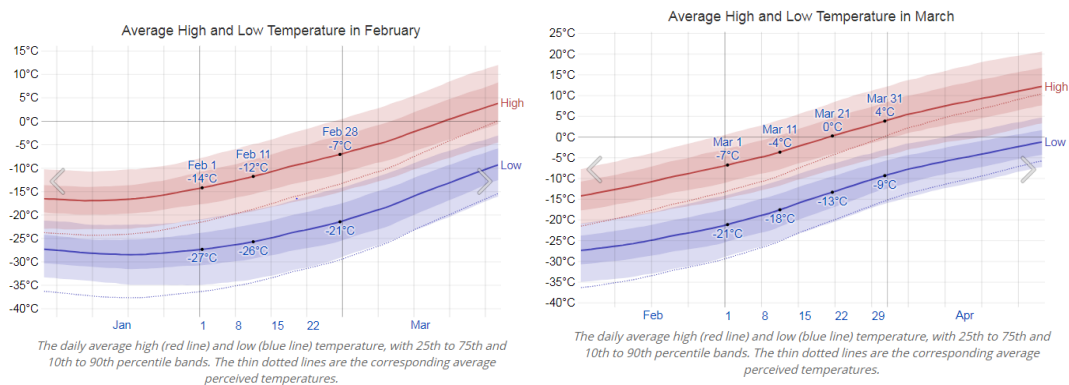
#### **4.3 Monitoring Station**

The measurements taken during the study period were collected from the online database called OpenAQ ([www.openaq.org](http://www.openaq.org)), where air quality data from 70 different countries were collected, monitored and shared worldwide.

There are total of 18 monitoring stations for air quality operating at Ulaanbaatar, Mongolia at the moment and 1 of these stations is located near the study area of "Glear" project. The monitoring station measures the pm2.5, pm10 and SO<sub>2</sub> amount, in mg/m<sup>3</sup>, on 30 minute cycle continuously since June, 2016.

## Chapter 5: RESULTS

The measurements were taken in the duration of 11th of February to 14th of March, with at least 10 sets of measurement with each type of device. The weather condition during the February and March was observed as followed:



**Figure 3 Average high and low temperature in February and March, 2019**  
[Source: weatherspark.com]

### 4.1 Outdoor Measurements

The following figures show the comparison between measurements by the DustTrack, and the data collected from Monitoring Station, expressed by 3 measurements which express combined 1 hour range since the DustTrack measurement was taken.

The DustTrack data was expressed in the figures by the average of the 30 minute measurement data, which does not include the sudden surge in PM amount due to car movement or wind during the measurement period. Especially around the monitoring station cars frequently passed by, followed by flying debris and dust cloud; which is expected to have certain effect to the final data.

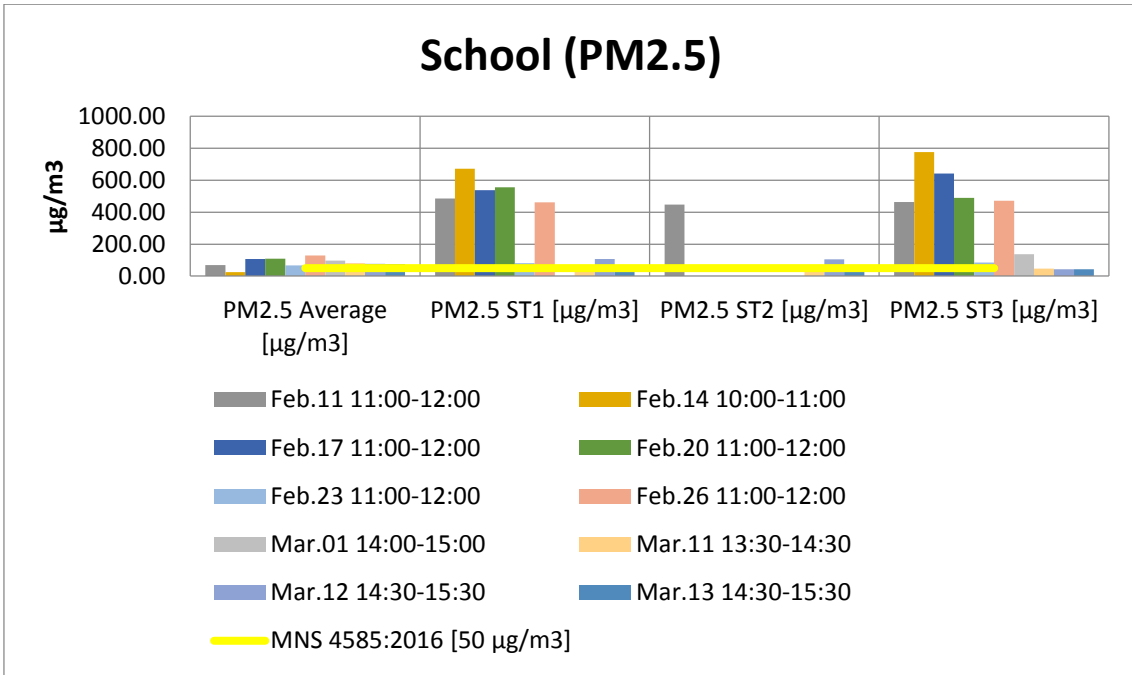


Figure 4 Measurement comparison data between DustTrack and Monitoring Station

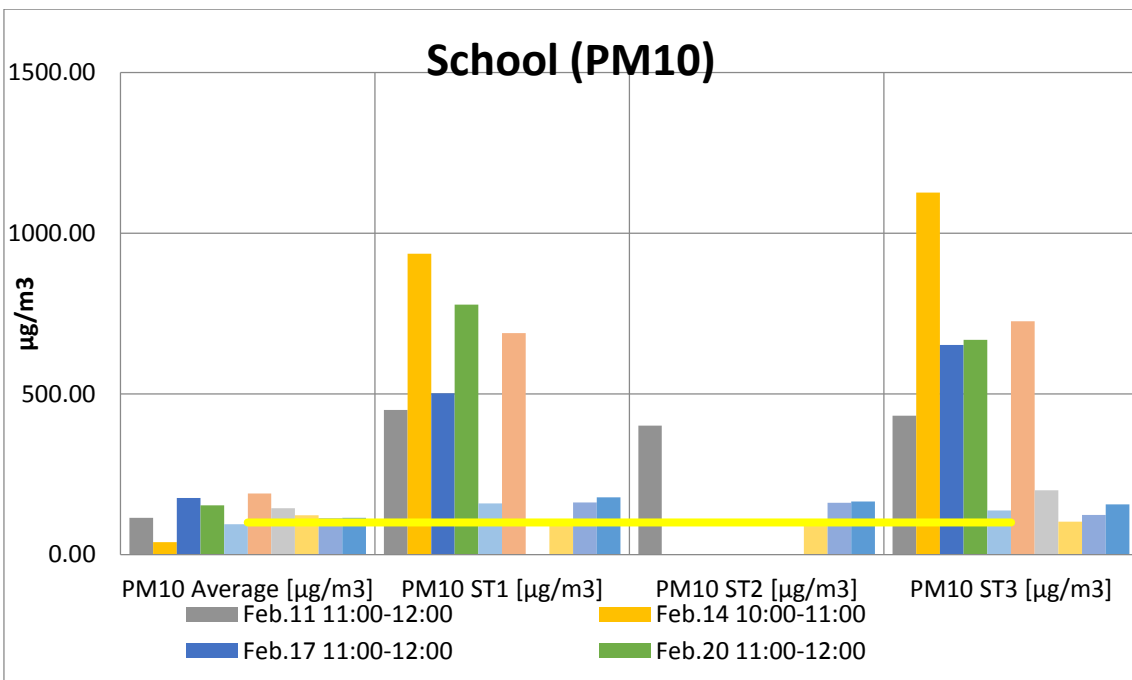


Figure 5 Measurement comparison data between DustTrack and Monitoring Station

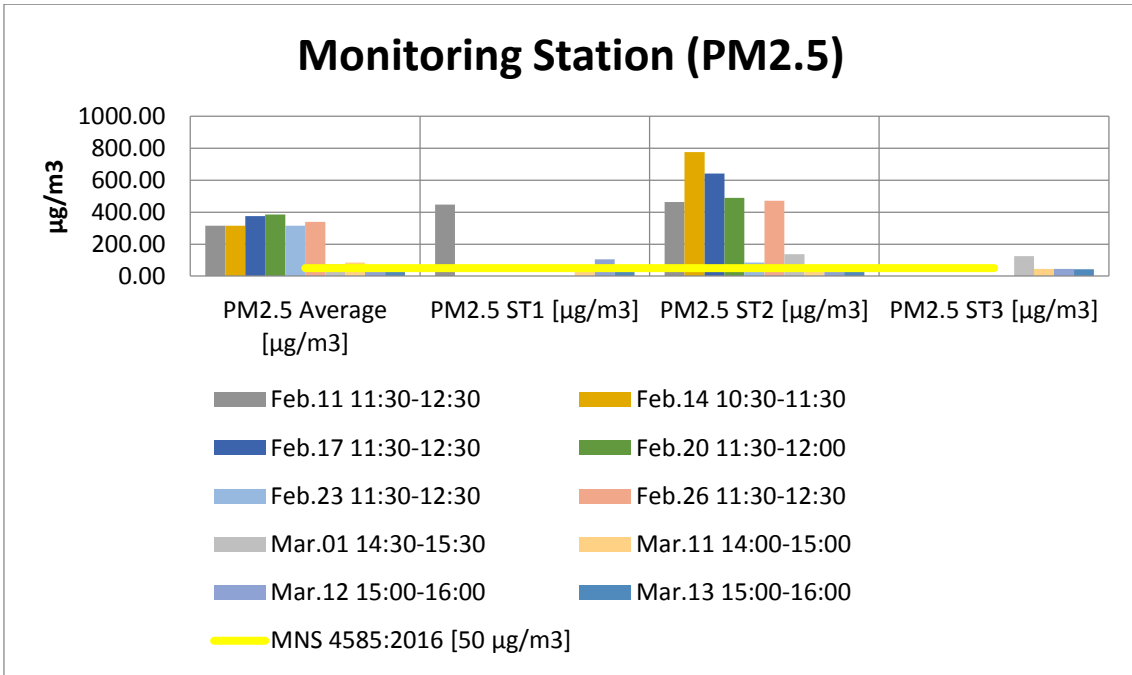


Figure 6 Measurement comparison data between DustTrack and Monitoring Station

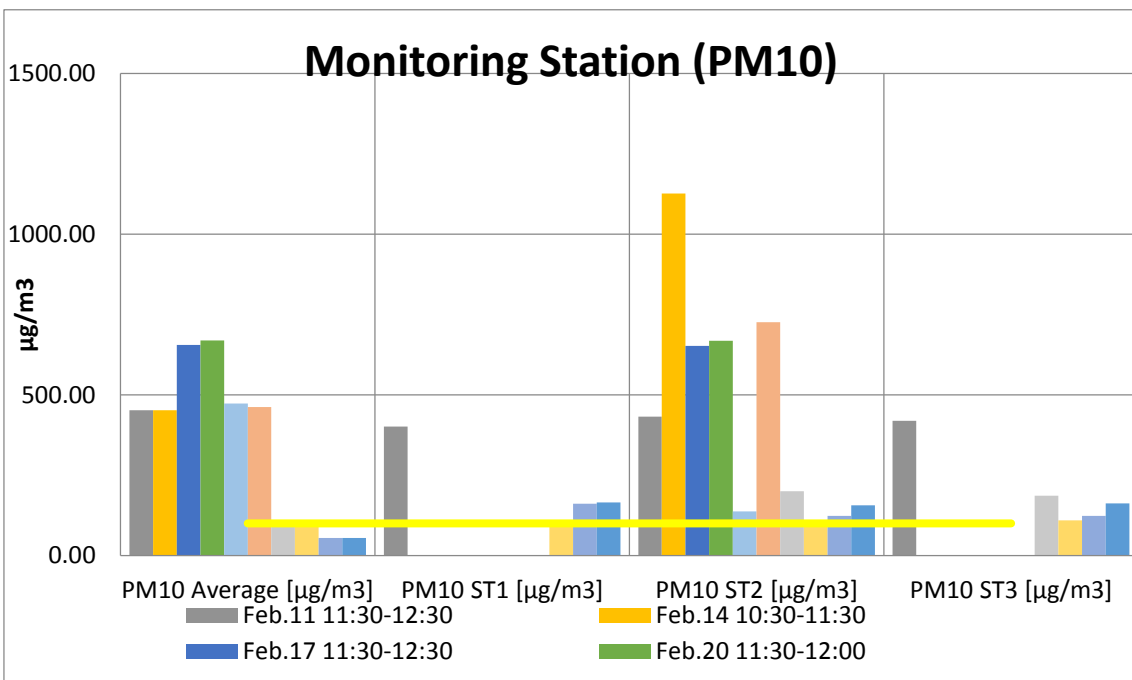


Figure 7 Measurement comparison data between DustTrack and Monitoring Station

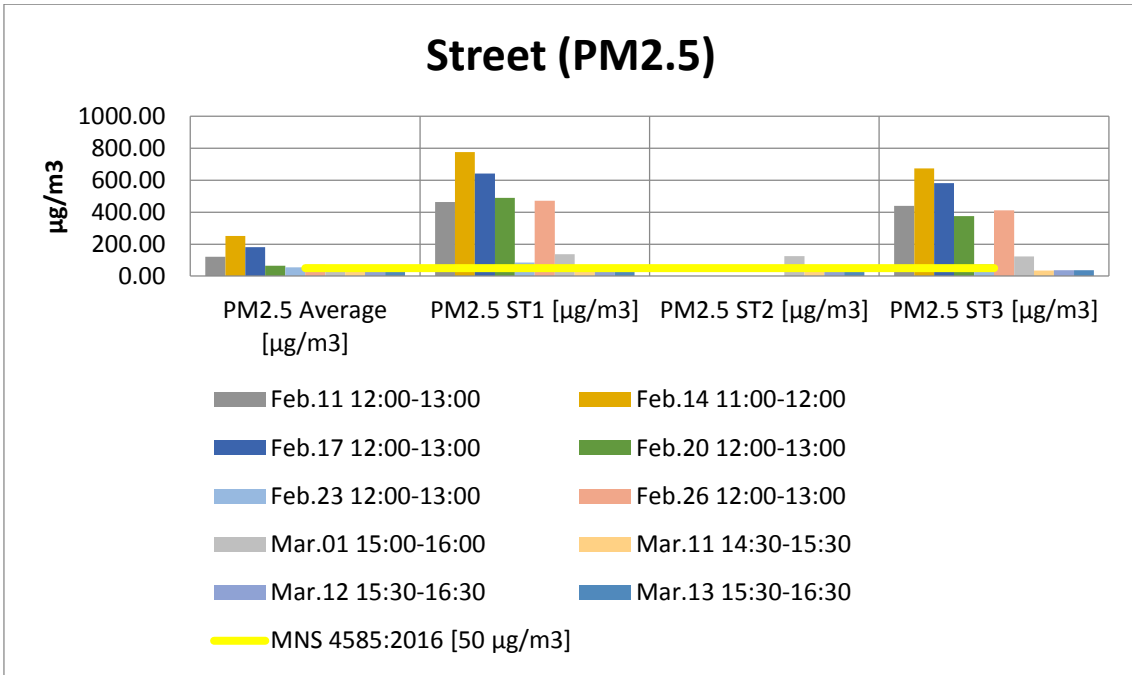


Figure 8 Measurement comparison data between DustTrack and Monitoring Station

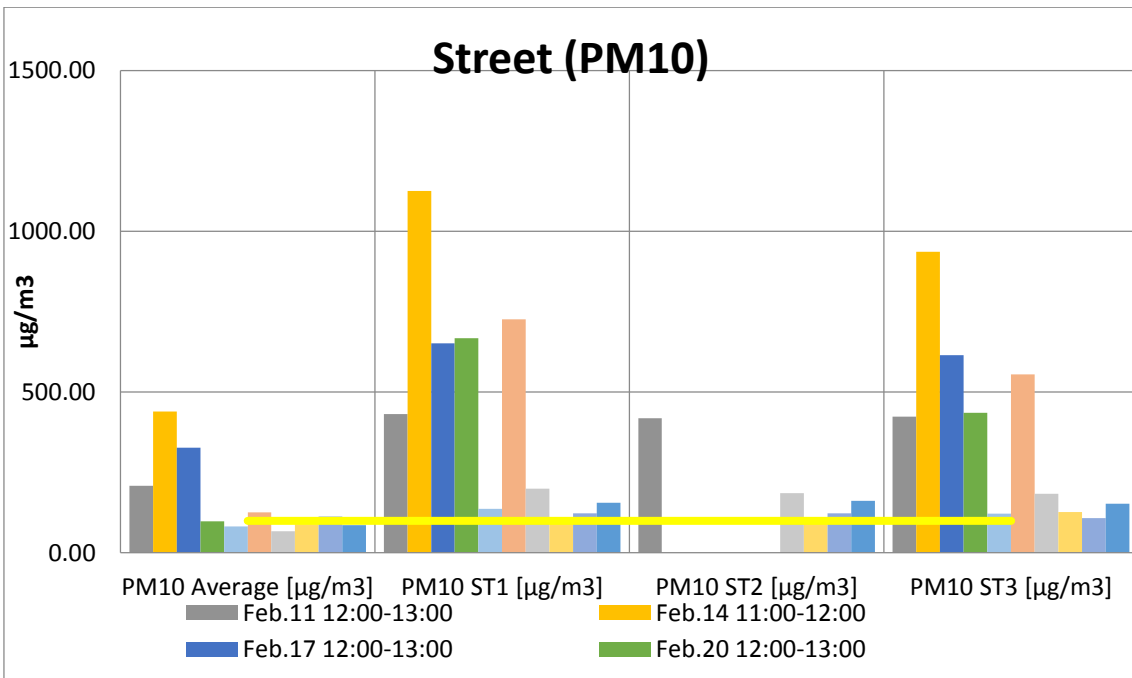


Figure 9 Measurement comparison data between DustTrack and Monitoring Station

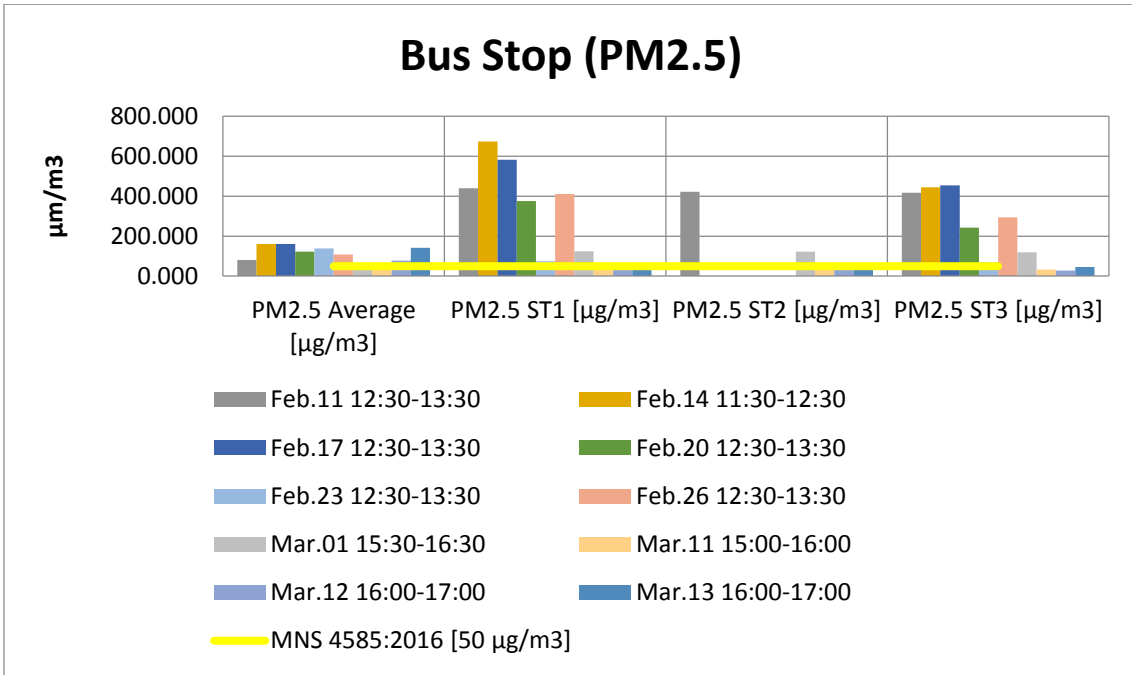


Figure 10 Measurement comparison data between DustTrack and Monitoring Station

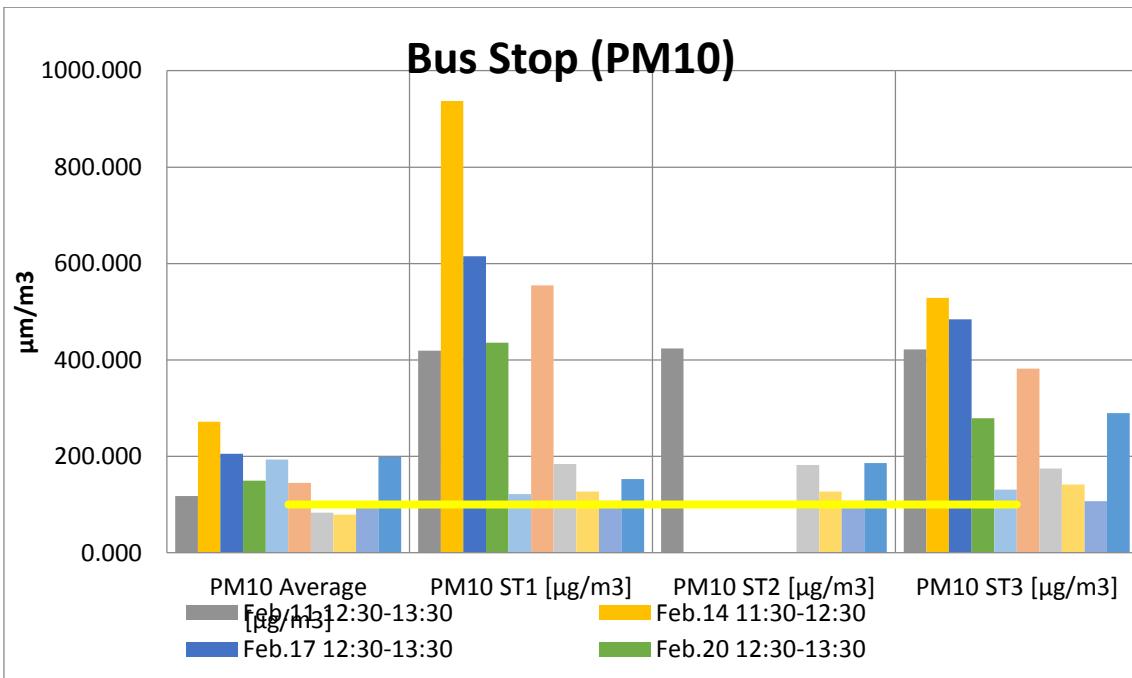


Figure 11 Measurement comparison data between DustTrack and Monitoring Station

**5.2 Indoor Measurements**

The air quality inside the household during fire being lit, deep frying food, and changing stove pipe while the fire is lit, which happened frequently during the project period, where measured using the DustTrack.

The lack of known PM source inside the chosen location during measurement indicates the possibility of the furnaces used in some of the Gers to have been producing high amount of fine dust into the ambient air during firing.

The act of stove pipe changing tends produce high amount of particulate matter into the air due to burning fuel in the furnace with open stovetop. As shown on Figure 16 the PM2.5 and PM10 exceeded alarming amount of 4000  $\mu\text{m}/\text{m}^3$  , which is 80 times higher for PM2.5 and 40 times higher quantity for PM10 amount allowed by the MNS4585:2016.

Surprisingly deep frying food inside the Ger, Figure 18, produced nearly similar amount of particulate matter as the aforementioned act of pipe changing.

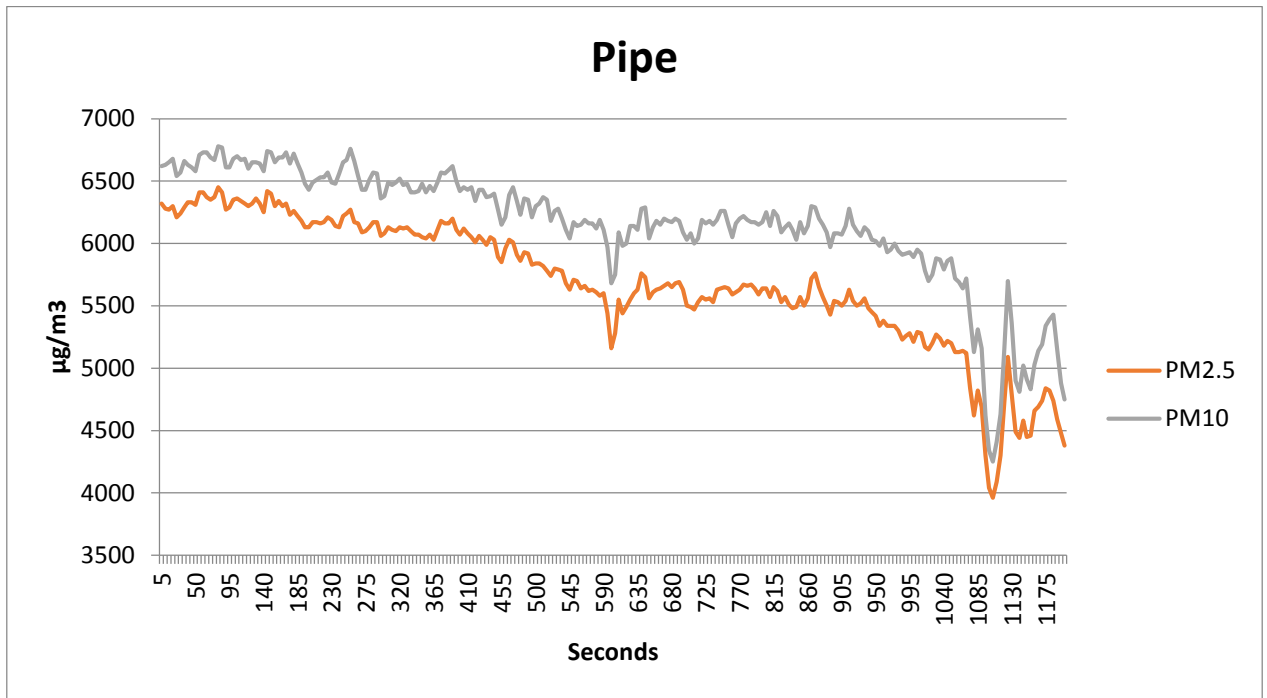


Figure 12 ppm measurement during replacement of pipe

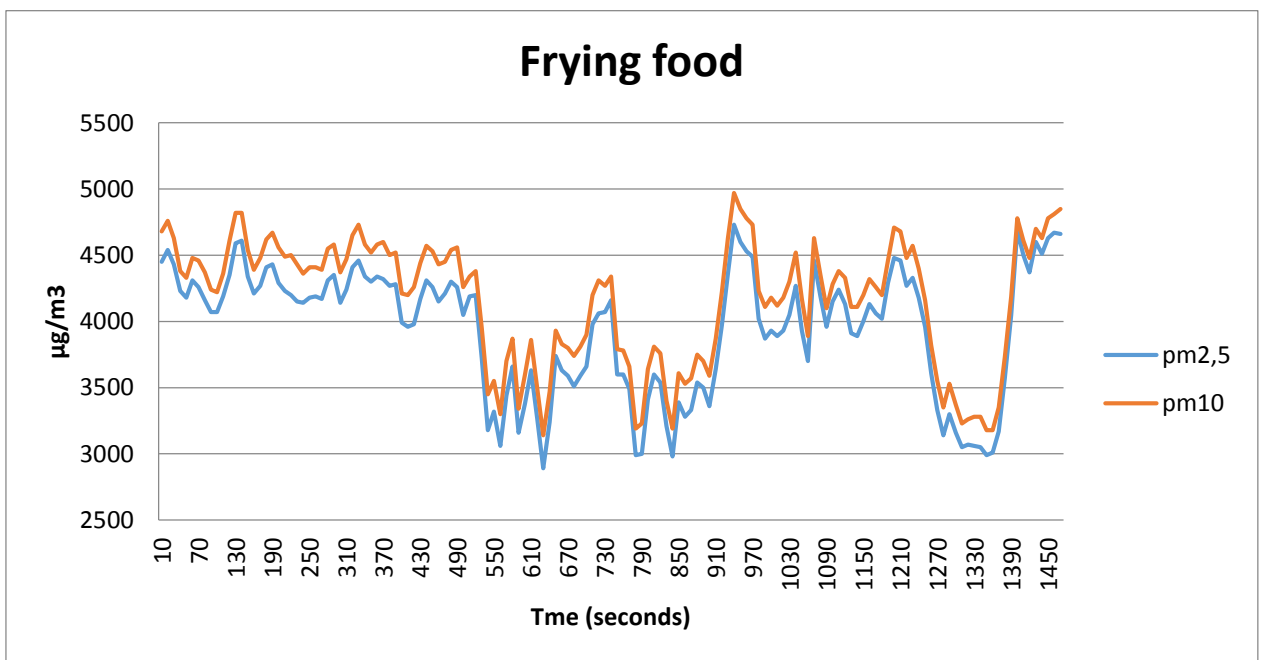


Figure 13 ppm measurement inside household during deep frying food

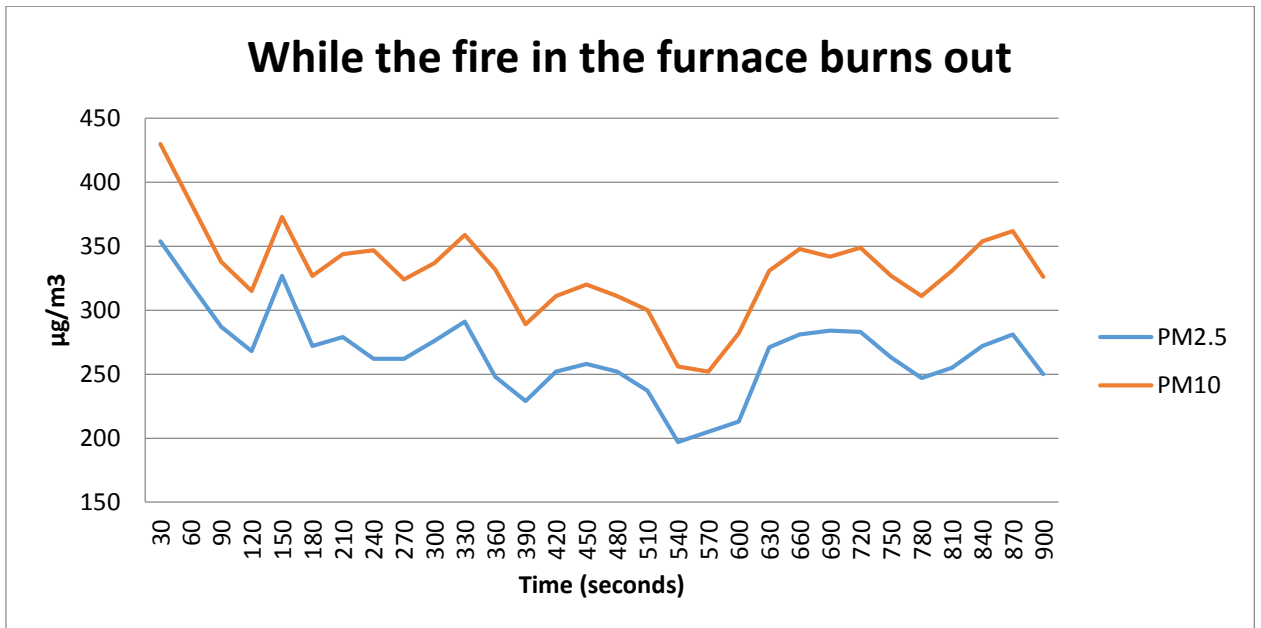


Figure 14 measurement of burning out fuel

The Figure 20 to Figure 23 shows the Indoor air quality comparison between days with ESP working and says without ESP. The constant surge in the chart, albeit different time frame, indicates the constant actions that result in high amount of particulate production, such as firing the furnace, taking out ash, cooking etc, and thus further implies that burning common household fuels such as coal and wood produces high amount of fine dust and pollutes the indoor air.

As shown on the charts there are slight but noticeable difference between the measurements, which implies that the ESP decreases the amount of fine dust production and entering into the household air, albeit small but significantly.

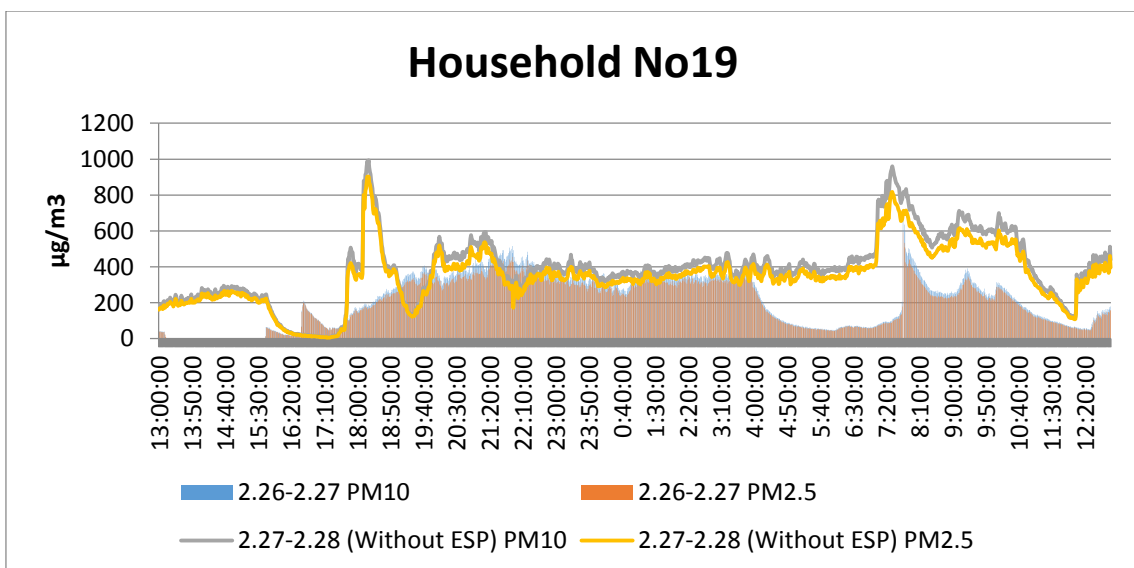
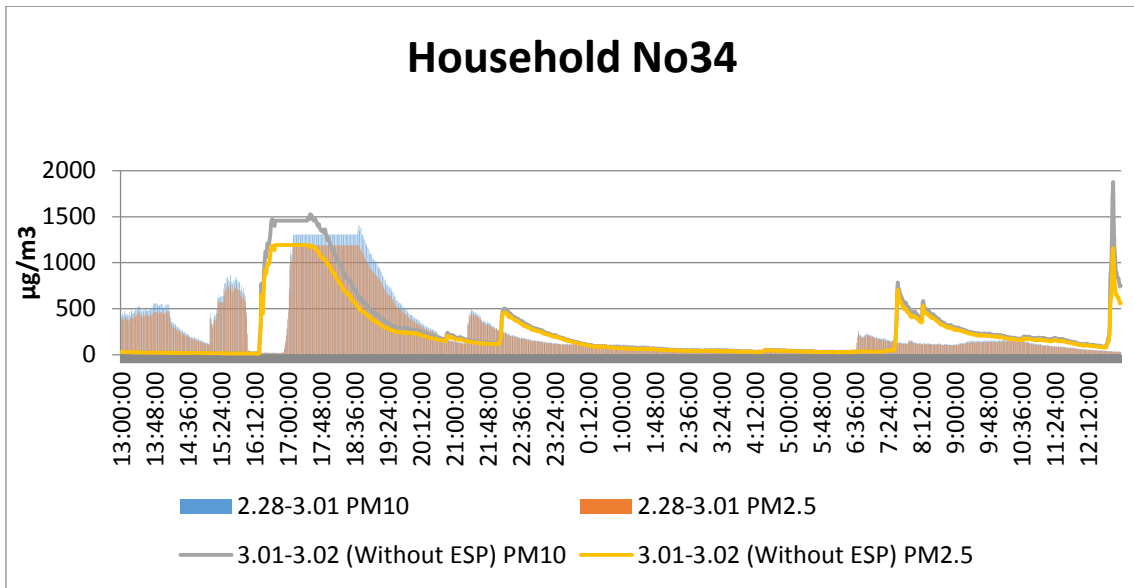
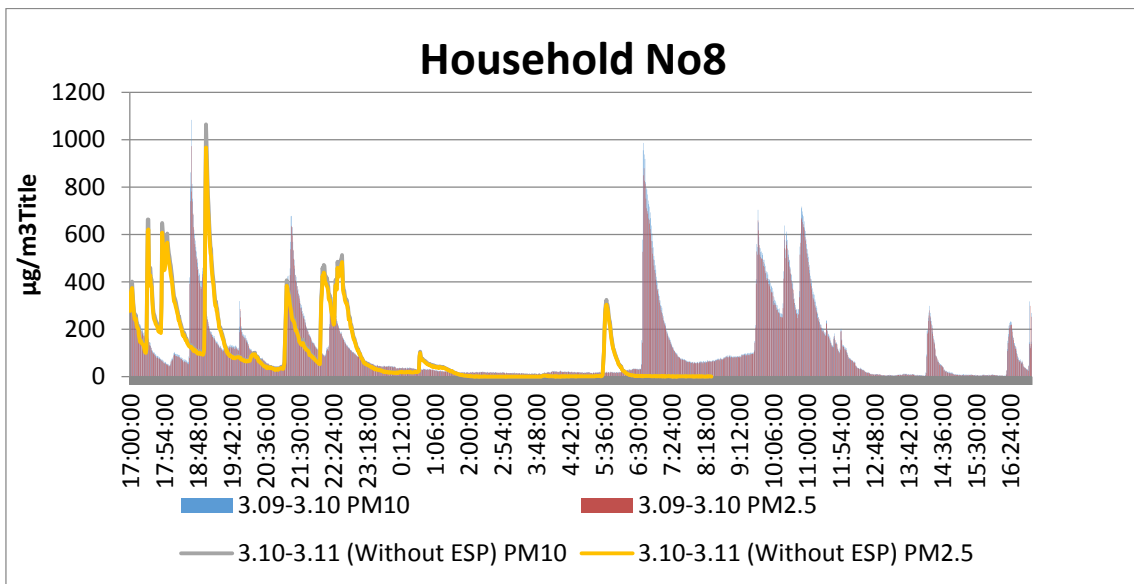


Figure 15 Ambient and Outdoor data collected from Household No19



**Figure 16 Ambient and Outdoor data collected from Household No 34**



**Figure 17 Ambient and Outdoor data collected from Household No8**

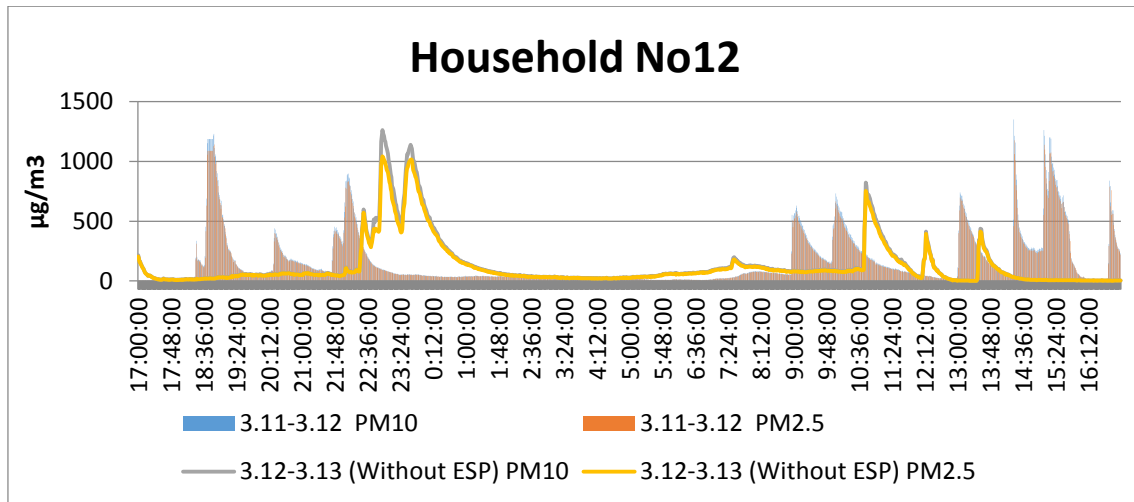


Figure 18 Ambient and Outdoor data collected from Household No12

Also, in warmer period, from 9<sup>th</sup> to 14<sup>th</sup> of March, the PM amount during the stable period of midday is almost within the MNS4585:2016, as compared to the measurements from February where even during midday the particulate amount exceeded the standard by at least 2 folds.

### 5.3 Indoor and Outdoor measurement comparison

The indoor measurements by the DustTrack are compared to those of monitoring station in Figures 24 and 25. Compared to the previous comparison of DustTrack and Monitoring station data, the following shows clear decrease, on most of the measurements, in fine dust abundance compared to outdoor data.

The Indoor measurements, taken by Sensedge, and Outdoor measurements, from the Monitoring station, are compared in a graph as following: (Figure 26 to Figure )

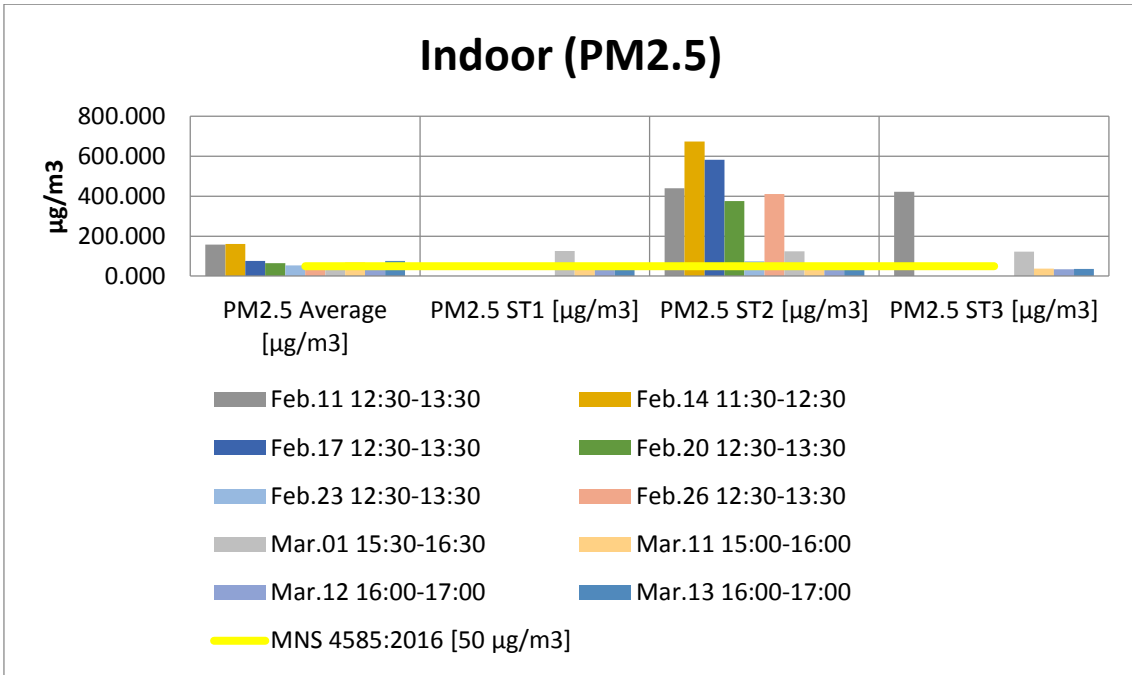


Figure 19 Measurement comparison data between DustTrack and Monitoring Station

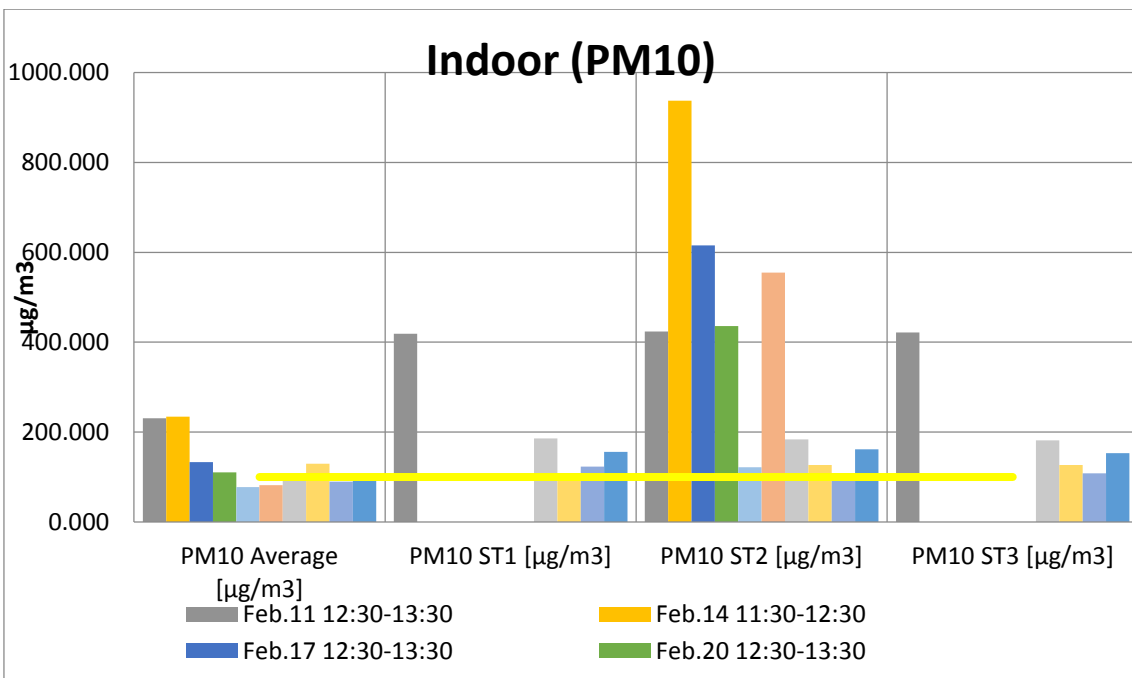


Figure 20 Measurement comparison data between DustTrack and Monitoring Station

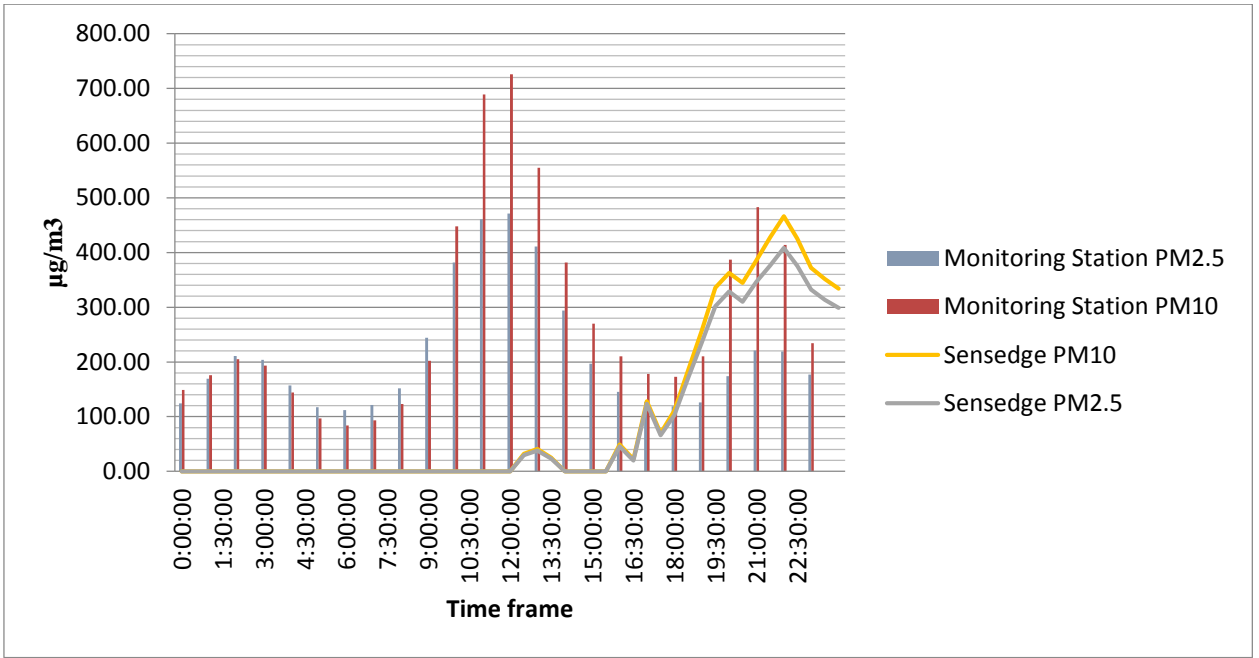


Figure 21 Measurement comparison between Monitoring station and Sensedge

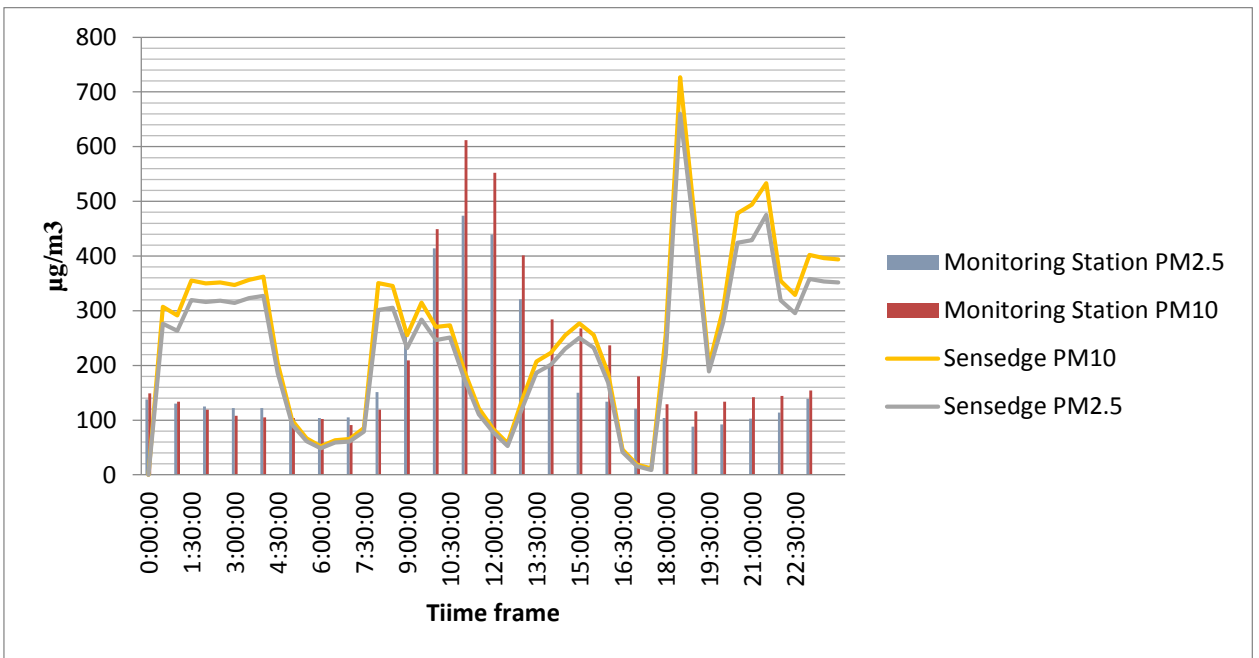


Figure 22 Measurement comparison between Monitoring station and Sensedge

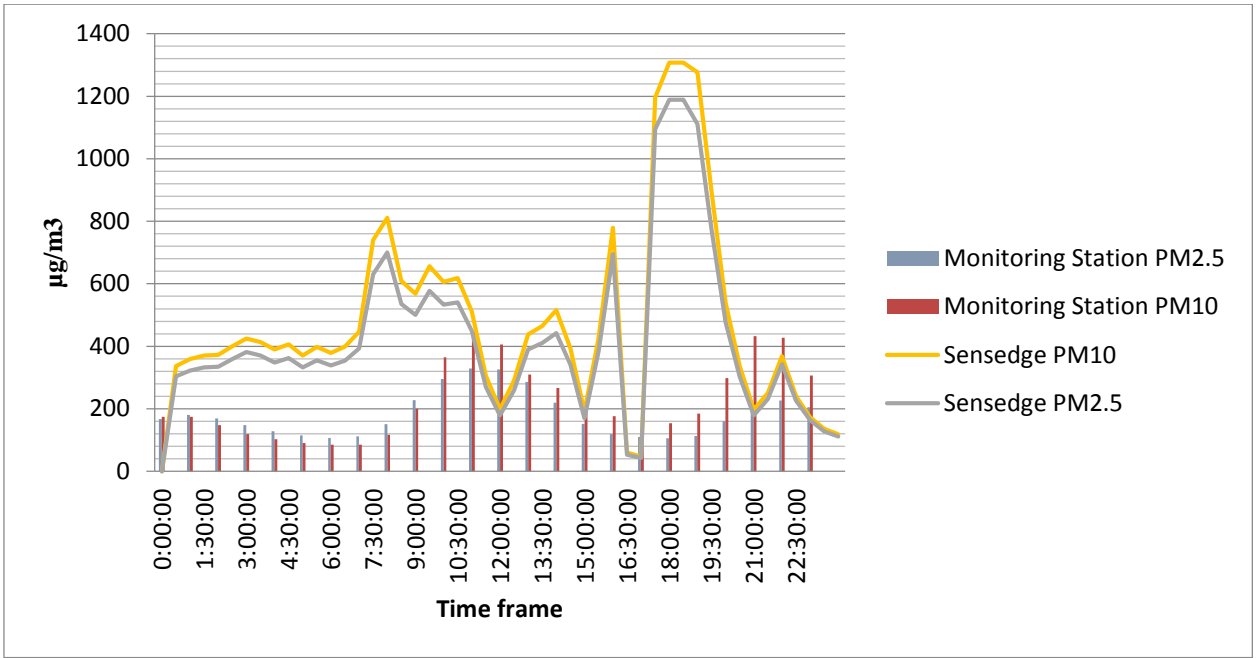


Figure 23 Measurement comparison between Monitoring station and Sensedge

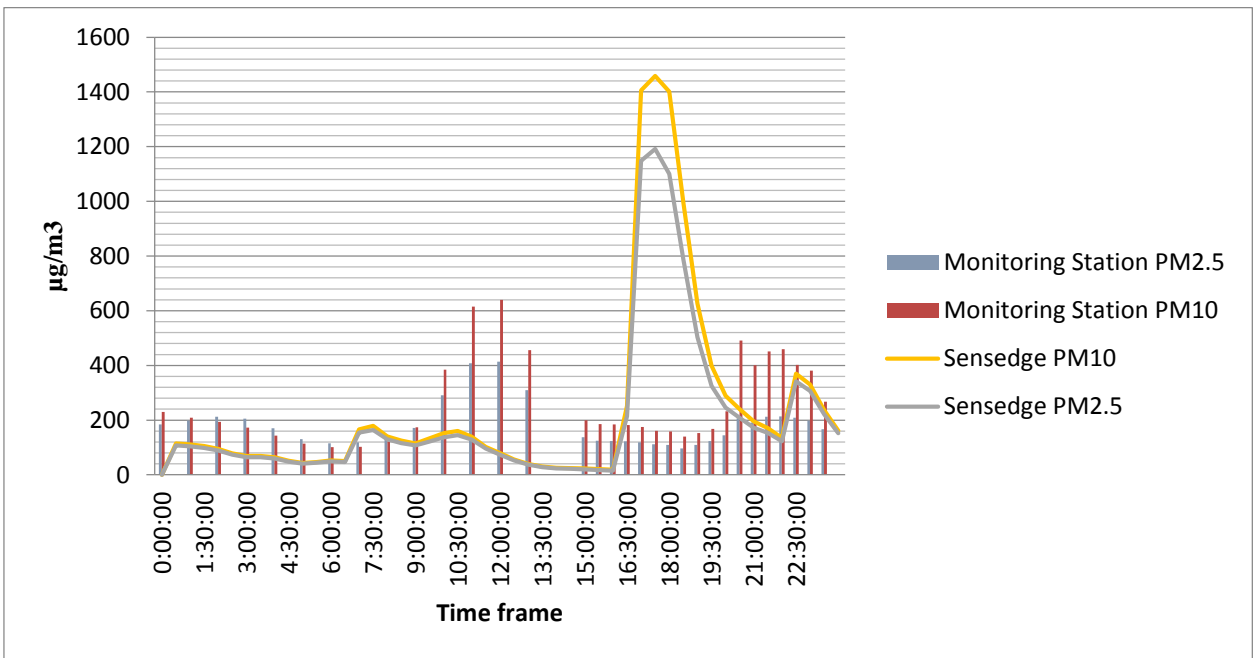


Figure 24 Measurement comparison between Monitoring station and Sensedge

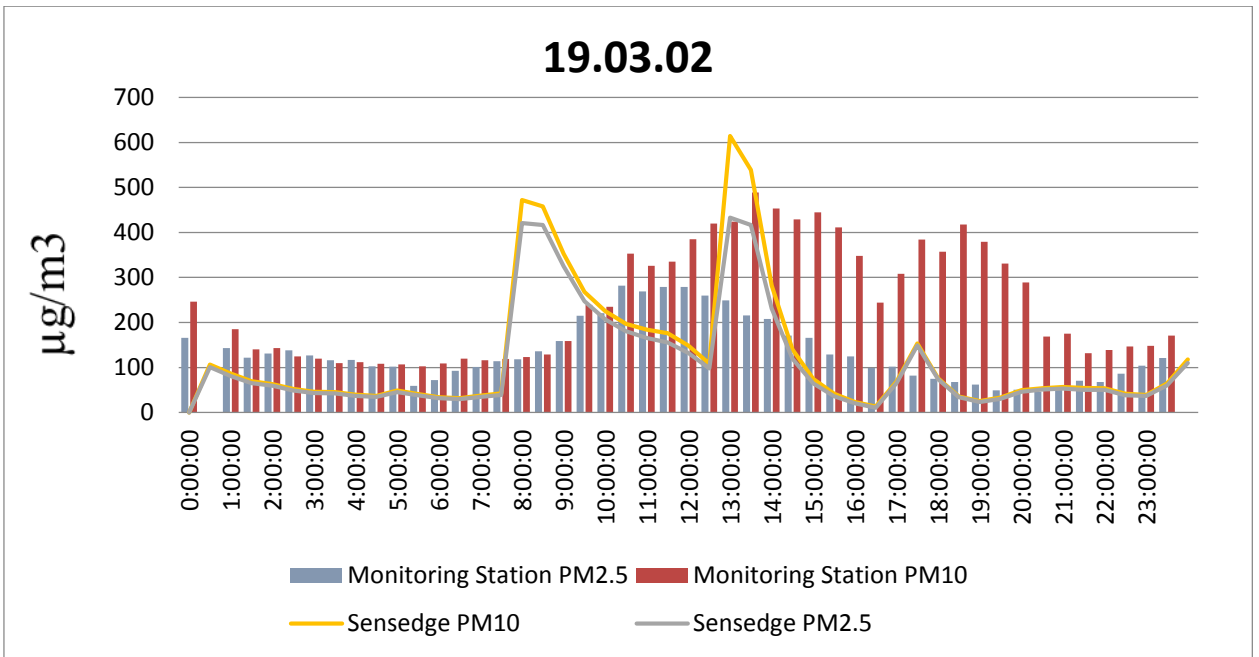


Figure 25 The comparison between Monitoring station data and sensedge measurements on 2<sup>nd</sup> of March

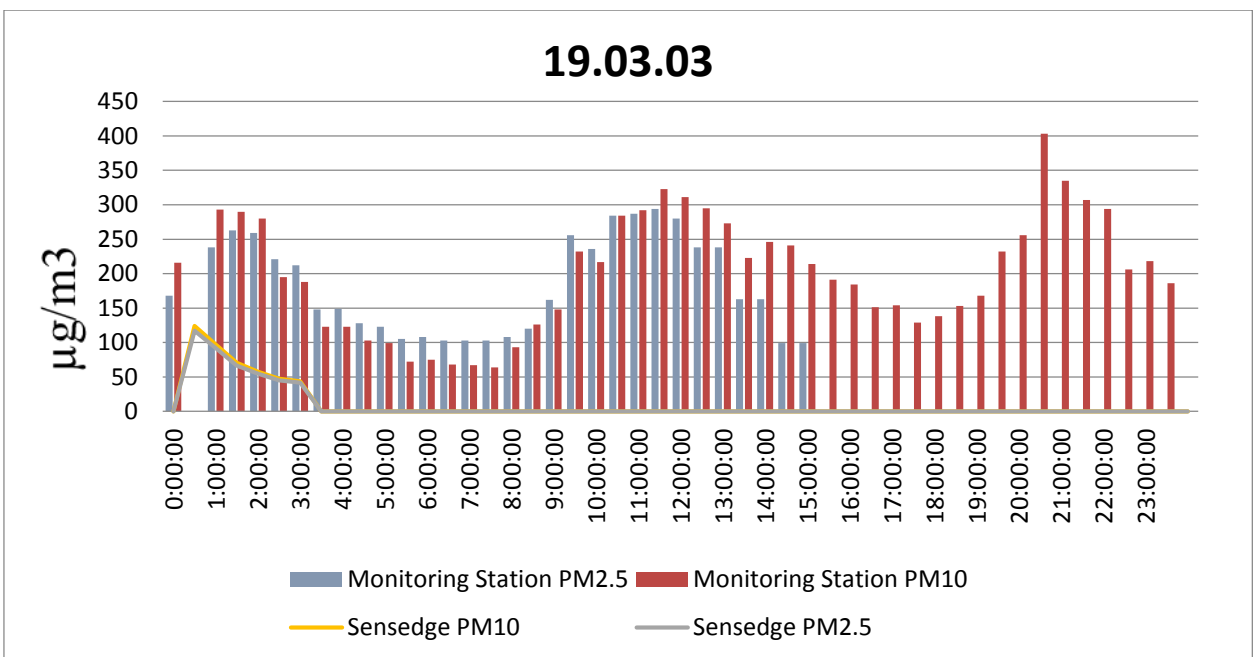


Figure 26 The comparison between Monitoring station data and sensedge measurements on 9<sup>th</sup> of March

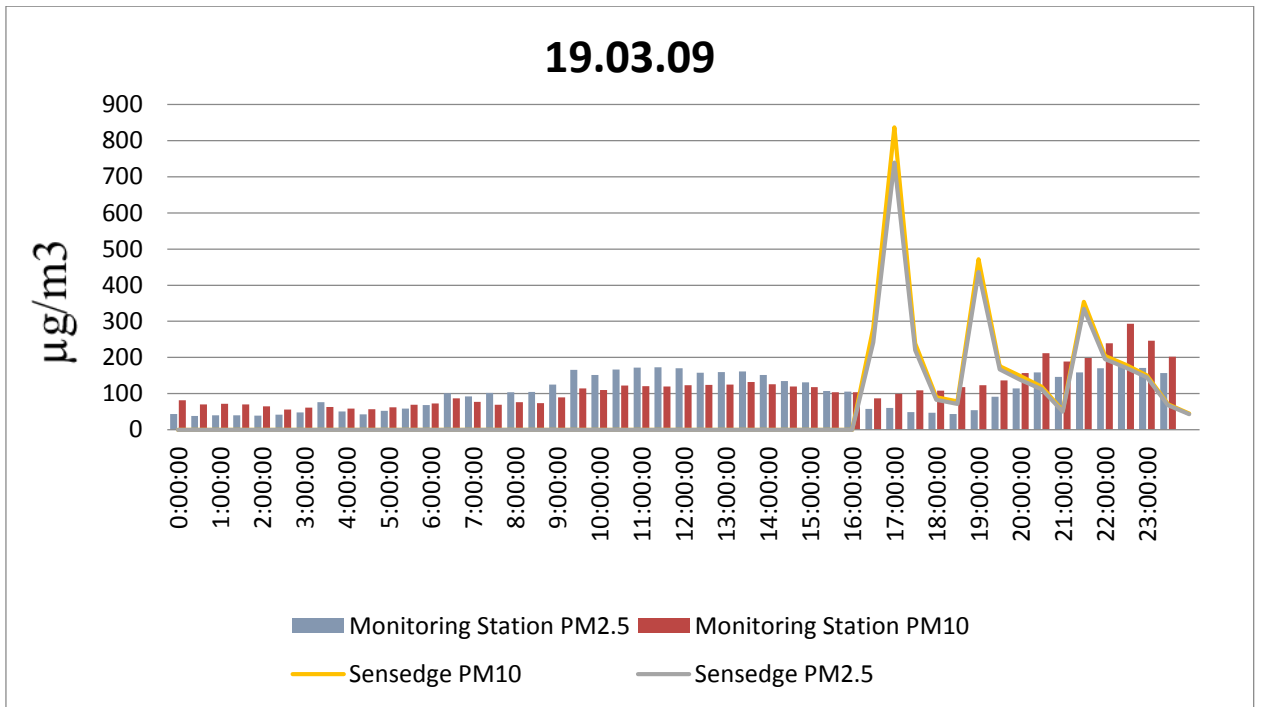


Figure 27 The comparison between Monitoring station data and sensedge measurements on 9th of March

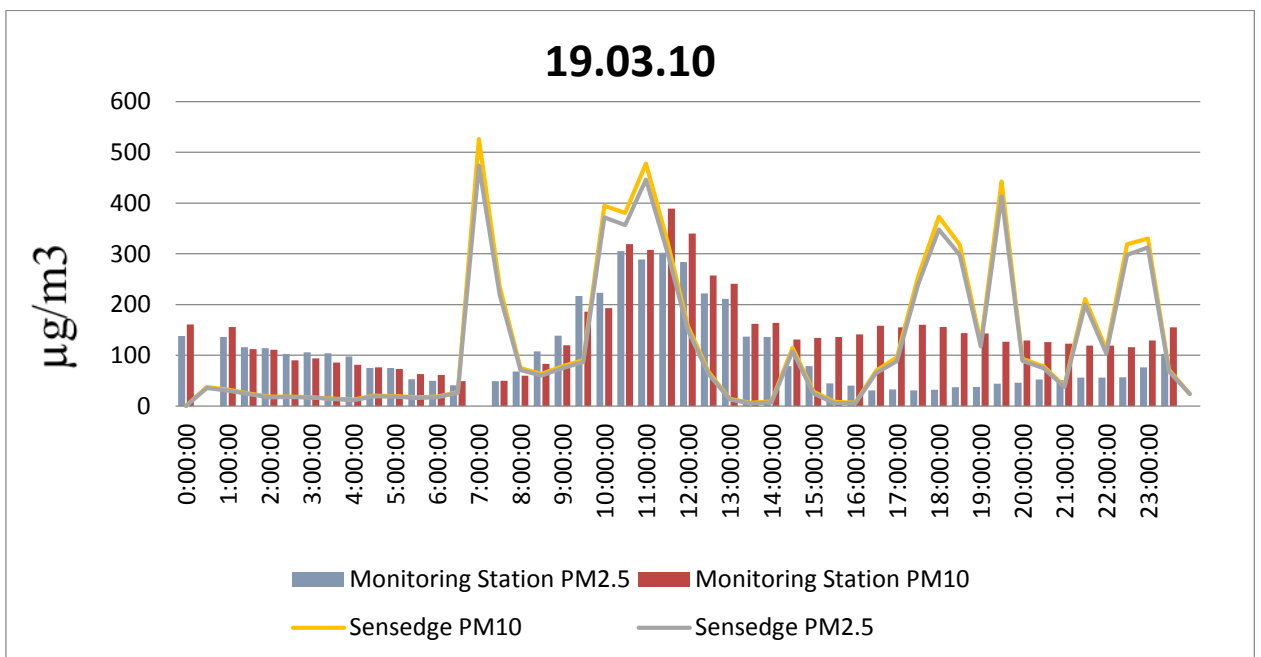


Figure 28 The comparison between Monitoring station data and sensedge measurements on 10th of March

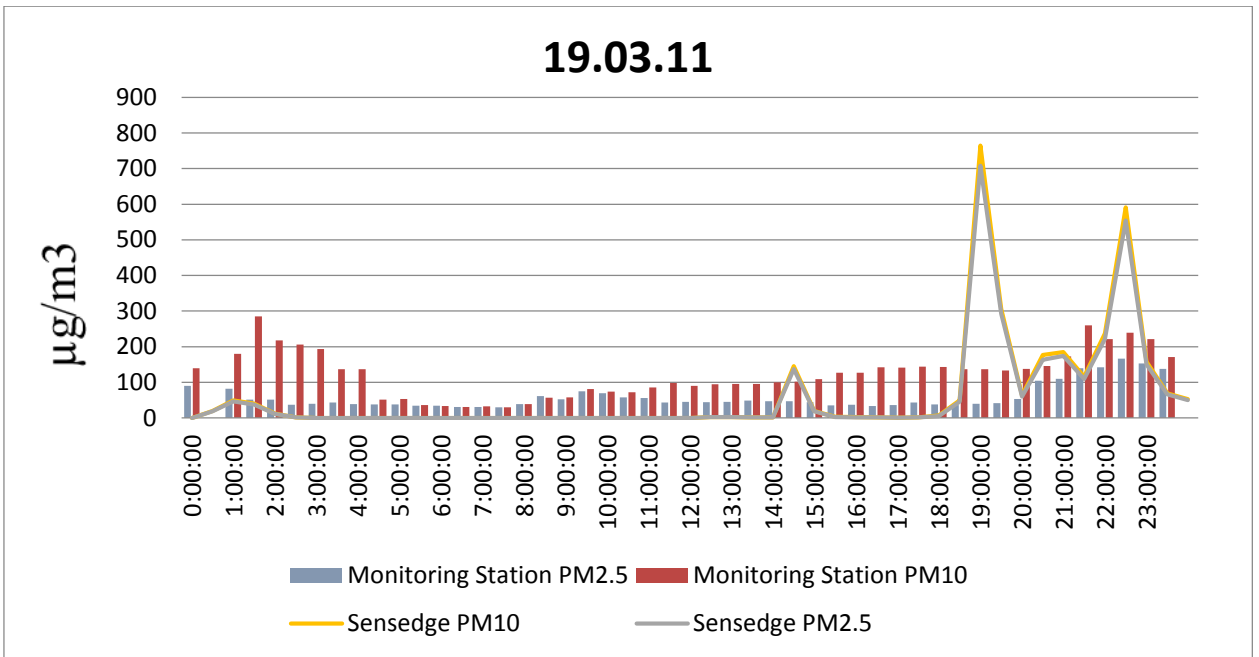


Figure 29 The comparison between Monitoring station data and sensedge measurements on 11<sup>th</sup> of March

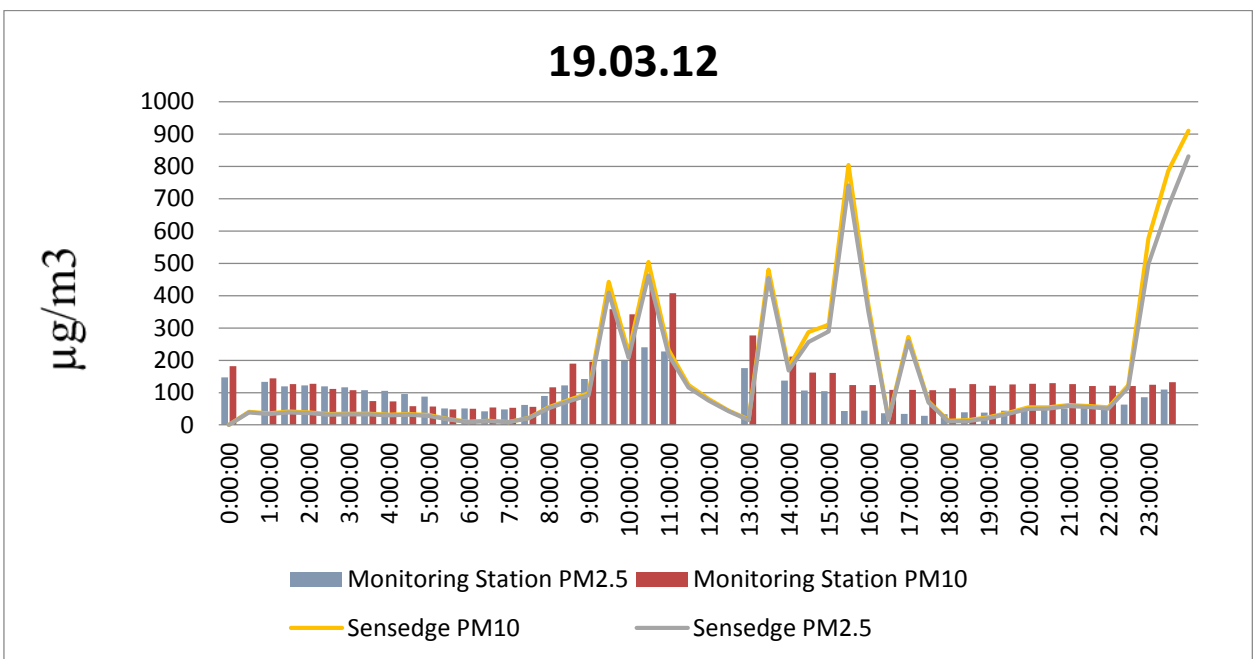
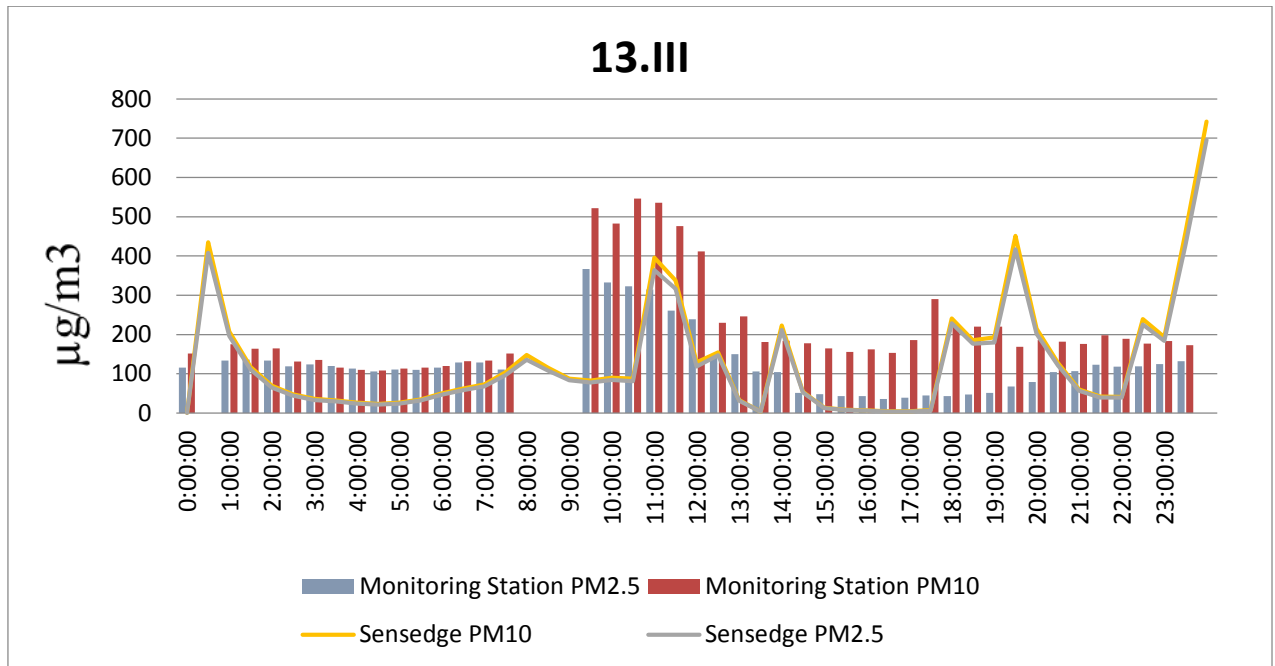


Figure 30 The comparison between Monitoring station data and sensedge measurements on 12 th March



**Figure 31 The comparison between Monitoring station data and sensedge measurements on 13<sup>th</sup> of March**

These figures clearly show the clear trend of increase in the indoor air pollution, during the active furnace firing periods, and increasing trend in the outdoor air pollution which is around the time range when the traffic concentration and car mobility increases.

The sudden increase in the indoor particulate amount could have been due to unknown activities which triggered instantaneous yet short term fine dust production into the air.

## Chapter 6: Conclusions and Recommendation

From the data collected during the measurements and the figures above the following conclusions could be reached:

- There are different peak time for Indoor and Outdoor PM concentration, which oddly correlates to the office hours; traffic concentration and dinner time are most significant time periods for the time being.
- From the above conclusions and data collected we could specify the car engine, furnace and loose debris as the main sources of pollution. Thus, further investigation on pollution source is needed for further proof and studies.
- The Indoor air quality comparison and the amount of dust collected from the household through ESP indicate the ESP has positive effect on reduction of fine dust pollution.

However, even though there is decrease in the measurement the difference is relatively small to reach profound scientific conclusion, thus could have been due to other possible factors as well.

Therefore further profound studies with stricter time period of use and concentration of household is needed.

## References

- [1] Popoola, L. T., Adebajo, S. A., & Adeoye, B. K. (2018). Assessment of atmospheric particulate matter and heavy metals: a critical review. *International Journal of Environmental Science and Technology*, 15(5), 935–948. <https://doi.org/10.1007/s13762-017-1454-4>
- [2] WHO. Policy Brief on air pollution, 2018, Ulaanbaatar  
SSRN:[http://www.wpro.who.int/mongolia/publications/20180228\\_policy\\_brief\\_on\\_air\\_pollution.pdf](http://www.wpro.who.int/mongolia/publications/20180228_policy_brief_on_air_pollution.pdf)
- [3] Guttikunda, S. K., Lodoysamba, S., Bulgansaikhan, B., & Dashdondog, B. (2013). Particulate pollution in Ulaanbaatar, Mongolia. *Air Quality, Atmosphere & Health*, 6(3), 589–601. <https://doi.org/10.1007/s11869-013-0198-7>
- [4] Bruce, N., Perez-Padilla, R., & Albalak, R. (2000). Indoor air pollution in developing countries: a major environmental and public health challenge TT - Pollution atmosphérique à l'intérieur des locaux: un problème majeur pour l'environnement et la santé publique TT - Contaminación del aire de locales ce. *Bulletin of the World Health Organization*, 78(9), 1078–1092. <https://doi.org/10.1590/S0042-96862000000900004>

## APPENDIX I

Time	pm10 ( $\mu\text{g}/\text{m}^3$ )	pm25 ( $\mu\text{g}/\text{m}^3$ )	humid	temp	voc(ppb)	co2
0:00:00	312	281.9	30.99	27.24	545.9	1039
0:01:00	325.6	291.7	31.24	27.2	538	1021
0:02:00	330	298.3	30.62	27.13	532	1014
0:03:00	300.1	273.6	30.66	27.13	527.2	1014
0:04:00	291.5	259.9	30.29	27.16	540.3	1019
0:05:00	290	252.1	30.09	27.21	568	1029
0:06:00	279.9	255.5	29.74	27.23	601.4	1027
0:07:00	283.6	253.9	29.95	27.24	637.7	1025
0:08:00	287.4	264.8	30.48	27.24	687.5	1023
0:09:00	318.4	280.5	30.8	27.22	688.7	1020
0:10:00	353.9	313.8	31.22	27.22	677.1	1022
0:11:00	356.2	319.6	31.17	27.2	663.1	1020
0:12:00	363.7	329.5	32.18	27.19	659.5	1019
0:13:00	360.8	320.8	32.39	27.21	664.1	1019
0:14:00	313.6	283.6	32.56	27.25	675.4	1023
0:15:00	295.3	263.1	32.37	27.26	689.9	1047

0:16:00	290.1	258.8	31.87	27.26	670.4	1065
0:17:00	285.3	258.7	31.57	27.27	655.2	1073
0:18:00	290.3	263.5	31.31	27.25	632	1080
0:19:00	308.2	276	31.72	27.22	623.2	1073
0:20:00	318.4	284.3	31.58	27.2	613.6	1064
0:21:00	317	285.6	31.67	27.2	611.2	1062
0:22:00	332.5	292.9	32.48	27.19	622.7	1066
0:23:00	302.9	277.7	33.63	27.19	673.3	1102
0:24:00	307.3	280.4	33.04	27.19	672	1134
0:25:00	284	254.2	31.83	27.14	656.8	1147
0:26:00	263.2	237.1	31.77	27.11	648.1	1169
0:27:00	268.9	243.1	32.42	27.15	675.8	1217
0:28:00	296.6	264.5	32.81	27.19	652.6	1224
0:29:00	298.8	271.3	33.02	27.16	625.9	1199
0:30:00	318.2	286	33.16	27.13	633.7	1183
0:31:00	307.5	279.6	33.62	27.11	711.8	1280
0:32:00	318	283.9	32.66	27.11	674.7	1278
0:33:00	302	271.8	32.15	27.11	672.2	1255
0:34:00	300.9	266.4	31.01	27.07	677	1270
0:35:00	281.9	255.2	30.34	27.01	675	1228
0:36:00	273.3	240.9	30.15	26.97	696	1225
0:37:00	268.7	240.3	29.83	26.93	712.4	1239
0:38:00	257.7	235.3	29.92	26.89	760.9	1288
0:39:00	269.5	243.6	29.81	26.86	740.8	1288
0:40:00	271.9	253.2	29.72	26.83	713.3	1254
0:41:00	275.6	248.6	29.43	26.8	704.3	1216
0:42:00	279.9	250.1	29.34	26.76	727.9	1203
0:43:00	273.6	244.5	29.18	26.73	757	1245
0:44:00	266.3	238.9	28.87	26.71	750.5	1273
0:45:00	266.5	243.7	28.9	26.68	700.7	1244
0:46:00	249.1	231.4	28.97	26.65	758.7	1226
0:47:00	248.4	232.3	29.05	26.67	1136	1284
0:48:00	263.9	243.3	28.91	26.71	1010	1203
0:49:00	281.2	255.6	29.39	26.75	904.3	1119
0:50:00	282.2	248.3	28.99	26.73	813.6	1072
0:51:00	289.2	263.3	29.15	26.68	743.1	1048
0:52:00	291	263.5	29.34	26.63	699.1	1044
0:53:00	300.6	271.6	29.51	26.58	665.9	1049
0:54:00	332.6	301.1	29.76	26.52	644.4	1050
0:55:00	329.2	297.2	29.53	26.49	621.5	1057
0:56:00	338.5	301.4	29.43	26.45	607.1	1060
0:57:00	350.6	320.6	29.28	26.41	596.6	1058
0:58:00	336.5	302	29.02	26.37	583.4	1058
0:59:00	313.2	283.2	28.58	26.33	574.8	1058
1:00:00	333.9	296	28.68	26.28	565.7	1048

1:01:00	327	291.4	28.73	26.24	557.6	1036
1:02:00	317.1	287.8	28.97	26.18	550.3	1035
1:03:00	340.1	305	29.46	26.14	549	1033
1:04:00	344.1	313.3	29.29	26.08	556.3	1030
1:05:00	332.8	299.8	29.04	26.05	567.2	1028
1:06:00	327.8	297.5	28.83	26	572.1	1023
1:07:00	343.7	302.4	29.09	25.96	575.7	1023
1:08:00	378	335.4	29.14	25.91	572.7	1015
1:09:00	367.4	330.7	28.74	25.84	565.5	1008
1:10:00	358.7	318.5	28.93	25.79	555.2	1004
1:11:00	369.9	325.9	29.16	25.74	550.4	1002
1:12:00	368	337	28.87	25.67	543.9	995.7
1:13:00	351.3	323.1	28.96	25.61	535.9	992.7
1:14:00	362.6	328.7	28.95	25.56	532.3	990.7
1:15:00	361.4	321.4	28.59	25.5	529.4	988.6
1:16:00	343.3	309.5	28.37	25.45	515.1	987.7
1:17:00	362	326.9	28.59	25.4	508.9	984
1:18:00	369.8	332.3	28.27	25.35	500.2	975.9
1:19:00	350.5	313.9	27.87	25.31	484.4	974.7
1:20:00	342	310.7	27.65	25.27	477.7	971.3
1:21:00	349.3	319.5	27.68	25.22	467.8	966.5
1:22:00	351.2	321	27.65	25.18	465.2	960.2
1:23:00	360.5	324.9	28.17	25.13	460.7	958.3
1:24:00	389.6	341.7	28.18	25.07	458.1	951.8
1:25:00	363.9	325	28.27	25	448	945.8
1:26:00	385	347.5	28.72	24.94	445.3	943.9
1:27:00	374.9	339	28.27	24.87	445.4	941.5
1:28:00	369.7	331.2	27.93	24.82	438.3	938.4
1:29:00	359.5	327.5	27.96	24.75	432.1	930.4
1:30:00	364.3	327.5	27.87	24.7	432.9	925.2
1:31:00	360.4	327.5	27.95	24.64	430.1	922.1
1:32:00	370.5	328.4	28	24.58	424.8	925
1:33:00	375.3	333	28.05	24.52	425	921.1
1:34:00	349.4	314.5	27.48	24.46	425.8	912.7
1:35:00	340.6	308.3	27.3	24.39	429.5	906.1
1:36:00	350.7	317.1	27.6	24.32	434.7	898.5
1:37:00	370.7	331.4	28.09	24.25	433.1	899.1
1:38:00	369.9	337.5	27.94	24.19	433.5	896.2
1:39:00	358.7	324.1	27.56	24.13	429.7	884.1
1:40:00	368.5	330.7	27.7	24.06	435.3	881.3
1:41:00	348.5	314.8	27.15	24.01	433	881
1:42:00	392.5	355.6	27.45	23.96	429.6	879.6
1:43:00	350.7	318.6	26.97	23.91	430.7	876.8
1:44:00	347.1	316.7	27.57	23.87	433.3	876.6
1:45:00	353.2	316.4	26.91	23.8	431	879.1

1:46:00	347.4	310.5	27.11	23.75	434.6	880.8
1:47:00	339.8	312.1	27.47	23.71	437.5	879.3
1:48:00	338.7	311.5	27.08	23.64	434.7	879
1:49:00	344.7	313.9	26.9	23.58	435.1	878.8
1:50:00	332	299	26.79	23.51	440.7	875.8
1:51:00	334.1	303.5	26.7	23.44	443.9	872.8
1:52:00	329.9	297.1	26.75	23.37	447.1	866.3
1:53:00	340.1	305	27.28	23.3	447.3	865.4
1:54:00	351.6	317	27.06	23.24	448.6	866
1:55:00	332.6	297.8	26.88	23.16	438.1	859.3
1:56:00	351.7	320.6	27.05	23.09	440	859.7
1:57:00	328.6	300.3	26.67	23.02	435.8	854.5
1:58:00	323.4	292.8	26.39	22.94	425	845.5
1:59:00	329.1	297.5	26.76	22.88	424.1	842.7
2:00:00	354.3	311.8	27.21	22.81	426.2	844.2
2:01:00	332.8	298.3	26.48	22.74	420.5	846.9
2:02:00	331.7	292.9	26.24	22.69	418.7	843.6
2:03:00	321.6	284.7	26.34	22.62	416.4	837.2
2:04:00	348.5	312	27.05	22.55	423.5	837.1
2:05:00	364.5	324.3	27.08	22.48	425.8	840.9
2:06:00	322.5	298	26.78	22.41	418.5	841.1
2:07:00	345.3	314.1	27.12	22.35	423.3	843
2:08:00	352.2	320.1	26.67	22.29	420.9	849.3
2:09:00	346.7	314.7	26.4	22.24	416.2	840.1
2:10:00	346.3	311	26.5	22.2	420.5	840.7
2:11:00	358	321.9	26.86	22.14	425.2	842.5
2:12:00	363.5	329.9	26.86	22.09	429	843.8
2:13:00	361.2	332	26.92	22.02	430.7	847.5
2:14:00	342.2	317.4	26.88	21.95	431.5	848.5
2:15:00	375.5	336.7	27.01	21.88	450.9	850.6
2:16:00	370.9	333.4	27.07	21.82	491	851.8
2:17:00	347.2	312.1	26.5	21.75	506	847.5
2:18:00	333.9	305.1	26.6	21.68	517.2	836.5
2:19:00	354.5	325.1	27.58	21.62	538.3	836
2:20:00	361.5	330.8	27.76	21.55	554.4	837.5
2:21:00	384.5	347.3	27.96	21.46	554.4	843.3
2:22:00	374.6	340.3	27.91	21.39	553.1	845.5
2:23:00	341	312.7	26.58	21.33	526.6	840.7
2:24:00	334.8	305.7	26.73	21.26	512.3	831.4
2:25:00	352.3	320.2	27.4	21.19	513	834.3
2:26:00	377.3	338.3	27.85	21.12	509.3	840
2:27:00	366.8	334.6	27.34	21.05	494.9	839.3
2:28:00	335.4	304.5	26.76	20.98	475.4	830.2
2:29:00	345.8	314.8	26.95	20.91	464.4	827
2:30:00	339.8	312.6	27.14	20.85	456.3	826

2:31:00	361.4	326	27.33	20.78	445.7	827.2
2:32:00	354.6	325.1	27.61	20.71	436	827.5
2:33:00	362.6	324.4	27.35	20.65	424.3	827.8
2:34:00	343.7	306.8	26.94	20.59	406.1	828.1
2:35:00	356.4	321.3	27.13	20.55	400.5	832.4
2:36:00	338.3	315.4	26.95	20.5	389.5	832.9
2:37:00	337.7	305.6	27.06	20.44	379.4	834.3
2:38:00	332.7	302	26.78	20.38	369.9	837.1
2:39:00	345.3	312	27.1	20.32	368	837
2:40:00	347.7	316.1	26.84	20.26	360.4	835.4
2:41:00	341.5	310.1	26.76	20.18	353.8	834.1
2:42:00	319.1	288.3	26.46	20.13	346.1	828.4
2:43:00	318.7	293.4	26.76	20.06	340.7	824.7
2:44:00	348.2	318.9	27.2	19.99	341	826.1
2:45:00	345.7	312.2	27	19.92	340.3	832.2
2:46:00	336.5	306.4	27.24	19.87	335.6	831.5
2:47:00	354.2	316	27.33	19.81	334.9	831.7
2:48:00	342.3	308.5	27.01	19.75	329.3	830
2:49:00	329.1	295.2	26.99	19.68	333	824.5
2:50:00	337.3	306.6	27.3	19.61	335.7	823.2
2:51:00	356.9	309.8	27.16	19.55	343.4	824.5
2:52:00	349	316.2	27.28	19.49	347.1	823.5
2:53:00	367.8	330	27.71	19.41	350.5	824.4
2:54:00	347.9	317.9	27.79	19.35	353.2	827
2:55:00	352.4	321	28.34	19.29	359.6	825.6
2:56:00	370.6	339.6	28.38	19.23	365	827
2:57:00	366.6	329.1	28.08	19.16	369.8	829.3
2:58:00	349	322.9	28.21	19.1	372.9	822
2:59:00	353.4	322.9	28.31	19.03	386.2	821.3
3:00:00	357	327.5	28.31	18.96	398.4	821.3
3:01:00	368	329.9	28.11	18.91	410.1	821.3
3:02:00	376.5	335.1	27.85	18.86	412.5	823.9
3:03:00	353.9	321.9	27.69	18.81	417.2	826.5
3:04:00	365.8	329.5	27.66	18.76	419	826.4
3:05:00	354.8	321.8	27.52	18.7	416	827.5
3:06:00	355.3	326.4	27.76	18.65	419.7	829.9
3:07:00	343.8	313.8	27.69	18.59	422.7	829
3:08:00	365	327.9	27.99	18.53	427.2	832.2
3:09:00	360.2	328.2	27.8	18.46	424.5	836.4
3:10:00	357.7	321.6	28.78	18.41	424.7	837.3
3:11:00	369.3	331.1	28.79	18.33	421.6	833.8
3:12:00	350.1	315.9	28.25	18.28	410	833.6
3:13:00	346.4	310.8	28.14	18.22	399.1	832.4
3:14:00	357.3	322.9	28.28	18.16	389.7	834.3
3:15:00	352.2	321.6	28.27	18.09	386.9	833.8

3:16:00	346	311.9	28.42	18.03	380.1	828.3
3:17:00	348.1	320.6	28.2	17.97	378.7	825.2
3:18:00	359.5	327.2	28.35	17.91	390	827.3
3:19:00	358.5	322.5	28.23	17.84	392.8	828.5
3:20:00	338.4	307.1	27.88	17.78	389	824.7
3:21:00	348.7	316.2	28.23	17.71	390.6	825
3:22:00	353.1	319	28.26	17.65	390.1	825.3
3:23:00	358	323.9	28.65	17.59	396.2	826
3:24:00	346.7	314.9	28.6	17.54	394.7	825
3:25:00	356.3	325	29.16	17.46	409.4	825.2
3:26:00	378.1	340.5	29.43	17.39	443.3	826.5
3:27:00	361.4	330.4	29.1	17.32	465.7	825.9
3:28:00	355.1	322.5	29.02	17.26	498	823.3
3:29:00	358.3	322.6	29.03	17.18	522.5	820.4
3:30:00	354.2	320.4	28.98	17.13	543.6	821.1
3:31:00	357.2	324.8	28.95	17.08	551.4	821.6
3:32:00	365.4	331.9	29.12	17.04	566.4	830.1
3:33:00	367.9	332.4	28.97	16.99	555	833.5
3:34:00	368.1	327.4	28.76	16.93	548.9	834
3:35:00	348	312.1	28.32	16.89	532.1	832.7
3:36:00	351.1	319.6	28.42	16.83	518.9	826.6
3:37:00	358.1	327.8	28.5	16.78	510.7	829.3
3:38:00	345.4	317.7	28.4	16.72	499.9	834
3:39:00	372.2	337.7	28.4	16.65	484.7	834.4
3:40:00	363.1	327.8	28.92	16.6	478.7	831.2
3:41:00	369	332.7	28.55	16.53	468.3	831.7
3:42:00	374	334.5	28.4	16.47	455.2	830.8
3:43:00	364.4	326.4	28.63	16.42	444.8	828
3:44:00	374.4	339.1	28.93	16.35	438.3	821.5
3:45:00	372.2	338.6	28.82	16.3	427.3	817.9
3:46:00	374.3	335.9	28.69	16.24	422.8	815.7
3:47:00	363.8	328.8	28.57	16.18	415	815
3:48:00	364.7	328.6	28.72	16.14	409.4	813
3:49:00	362.3	331.4	28.77	16.08	404.3	815.3
3:50:00	364.1	331.3	28.91	16.02	403.5	815.2
3:51:00	370.8	335.8	29.01	15.96	400.6	816.2
3:52:00	380.5	343.8	28.9	15.9	401.5	822.3
3:53:00	376.5	338	28.31	15.86	405	831.2
3:54:00	391	351.7	28.04	15.85	415.5	848
3:55:00	372.6	333.3	27.4	15.84	418	866.1
3:56:00	359.8	326.4	26.98	15.84	414.3	872.9
3:57:00	347.5	312.6	27.07	15.87	417.5	879.9
3:58:00	316.2	285.7	26.65	15.89	422.7	893.1
3:59:00	316.5	284.5	26.67	15.87	448	913.6
4:00:00	314.7	282.5	26.27	15.84	458.7	924.7

4:01:00	300.7	274	26.09	15.8	486.3	925.9
4:02:00	289.8	265.2	25.94	15.78	541.6	926.5
4:03:00	285.5	262.5	25.69	15.76	572.6	928
4:04:00	278.1	252.1	25.54	15.71	551.4	929.6
4:05:00	266.5	241.4	25.45	15.69	530.3	930.8
4:06:00	267	234.2	25.77	15.68	513.1	934.2
4:07:00	246.5	224.2	26.45	15.66	736.2	938.4
4:08:00	245	221.4	26.46	15.63	829.7	962
4:09:00	233.1	213	26.25	15.6	698.1	983.5
4:10:00	224.3	206.3	26.16	15.57	743.7	992.4
4:11:00	214.4	195.2	25.49	15.53	683.3	991
4:12:00	202.7	185.2	25.66	15.48	648.3	974.3
4:13:00	207	191	25.5	15.47	651.6	977.9
4:14:00	197	178.4	25.12	15.44	612.7	976.1
4:15:00	188.5	171.5	25.1	15.4	585.4	977.7
4:16:00	181.5	168.8	24.76	15.35	555.3	981.5
4:17:00	175.3	158.6	24.52	15.29	526.8	978.6
4:18:00	161.1	150.4	24.29	15.22	507.1	970.2
4:19:00	165.1	151	24.12	15.14	493.9	965.2
4:20:00	162.1	150.1	24.02	15.06	485.3	959.6
4:21:00	160.1	144.5	23.88	15.01	476.4	955.8
4:22:00	157.9	141	23.76	14.95	466.9	947.9
4:23:00	153.2	137.2	23.67	14.89	457.8	944
4:24:00	148.2	134.8	23.59	14.84	451.4	945
4:25:00	146.8	132.5	23.42	14.78	440.1	942.7
4:26:00	139.5	128.9	23.38	14.73	438.8	937.8
4:27:00	140.6	126.5	23.3	14.68	434.3	934.8
4:28:00	132.3	121.4	23.21	14.61	428.1	929.8
4:29:00	133.5	121.1	23.22	14.55	423.6	930
4:30:00	128.4	118.5	23.16	14.5	421.2	929.3
4:31:00	124.3	114.5	23.11	14.47	422.4	928
4:32:00	122.6	112.5	22.98	14.42	423.2	924.3
4:33:00	118.9	110.6	22.92	14.38	426.2	923.3
4:34:00	118.1	109.3	22.8	14.33	423.3	924
4:35:00	114.9	109.3	22.79	14.3	422.6	917.5
4:36:00	114.1	106.7	22.79	14.25	428.7	915.1
4:37:00	111.9	101.1	22.72	14.2	430	916
4:38:00	109.7	99.56	22.66	14.16	424.2	915.7
4:39:00	111.6	101.7	22.69	14.11	421.9	914.9
4:40:00	104	95.93	22.68	14.06	420	914.5
4:41:00	103.8	95.34	22.64	14.03	413.3	912.4
4:42:00	97.34	88.99	22.62	13.98	404.4	914.8
4:43:00	102.4	94.03	22.57	13.92	398.6	914.1
4:44:00	100.3	92.17	22.58	13.88	392.2	913.3
4:45:00	96.58	87.31	22.53	13.81	384	912.9

4:46:00	92.85	86.47	22.53	13.77	377.5	912.4
4:47:00	90.78	82.32	22.49	13.72	377	910.4
4:48:00	92.62	84.38	22.45	13.66	466.6	907.7
4:49:00	88.02	82.32	22.5	13.61	519.4	908.2
4:50:00	85.08	79.71	22.57	13.56	491.5	902.9
4:51:00	88.44	80.53	22.72	13.52	519.5	908.1
4:52:00	88.13	81.75	22.67	13.47	526.7	916.7
4:53:00	87.03	81.07	22.71	13.41	518.5	922.9
4:54:00	84.7	78.52	22.68	13.35	504.5	924.7
4:55:00	79.33	74.67	22.69	13.3	497.5	926.8
4:56:00	82.42	76.77	22.69	13.24	498.3	929
4:57:00	82.7	76.79	22.61	13.19	497.5	929.5
4:58:00	83.08	76.73	22.63	13.14	493.5	928.4
4:59:00	78.63	70.75	22.59	13.08	482.7	923.6
5:00:00	73.69	67.02	22.55	13.03	471.3	922
5:01:00	74.83	70.06	22.53	12.96	458.2	921.6
5:02:00	76.46	69.84	22.54	12.89	449.2	920.7
5:03:00	74.02	66.81	22.51	12.86	445.7	921.7
5:04:00	77.38	68.76	22.49	12.81	449.1	922.1
5:05:00	71.89	67.22	22.42	12.76	446	920.8
5:06:00	72.07	66.59	22.36	12.71	448.3	917.9
5:07:00	74.85	70.08	22.24	12.66	448.8	916.6
5:08:00	69.47	63.93	22.3	12.61	446.2	911.3
5:09:00	70.6	64.26	22.29	12.57	439	912
5:10:00	69.66	64.16	22.35	12.52	431	906.3
5:11:00	65.02	60.95	22.38	12.47	427.8	906.7
5:12:00	68.43	62.63	22.43	12.42	420	904.5
5:13:00	70.88	65.13	22.35	12.37	418.7	905.4
5:14:00	65.77	60.01	22.37	12.31	410.1	907.9
5:15:00	64.84	58.35	22.32	12.26	403.3	908.3
5:16:00	61.71	56.4	22.34	12.2	395.3	906.6
5:17:00	62.96	57.7	22.26	12.15	389.8	904.1
5:18:00	66.76	60.43	22.31	12.1	382.3	904.6
5:19:00	62.42	57.86	22.29	12.06	374.4	903.1
5:20:00	65.94	57.91	22.33	12	371.3	908
5:21:00	60.32	55.6	22.27	11.95	362.9	912.5
5:22:00	58.46	56.29	22.26	11.9	356.7	912.9
5:23:00	59.22	56.34	22.32	11.84	356.4	910.9
5:24:00	62.76	58.35	22.28	11.79	356.1	910.7
5:25:00	61.93	56.02	22.3	11.74	352	909.4
5:26:00	56.49	54.2	22.27	11.69	344.1	910.7
5:27:00	58.02	54.12	22.27	11.64	339.6	908.8
5:28:00	58.02	53.74	22.24	11.58	335.3	909.9
5:29:00	58.3	54.2	22.27	11.53	330.5	910.7
5:30:00	53.74	51.46	22.2	11.47	325.5	909.4

5:31:00	56.78	52.06	22.17	11.42	318.5	907.6
5:32:00	57.37	53.79	22.28	11.37	314.7	905.8
5:33:00	59.11	51.68	22.26	11.32	313.5	904.3
5:34:00	50.94	47.98	22.26	11.27	307	902.7
5:35:00	56.61	53.2	22.23	11.22	303.5	905.6
5:36:00	56.34	52.06	22.23	11.18	300.9	903
5:37:00	55.6	51.4	22.19	11.14	300.6	901.8
5:38:00	55.69	52	22.2	11.08	298.2	902.7
5:39:00	53.48	50.05	22.28	11.04	299.4	901.7
5:40:00	54.82	51.62	22.2	11	303.8	908.4
5:41:00	52.86	49.9	22.18	10.96	315.9	910.7
5:42:00	54.5	49.83	22.14	10.93	334.3	912.5
5:43:00	55.09	51.4	22.1	10.9	334	913.3
5:44:00	50	46.47	22.09	10.84	325.5	912.4
5:45:00	51.45	47.72	22.07	10.79	320.1	909.6
5:46:00	53.09	49.56	22.05	10.75	315.3	907.9
5:47:00	50.92	48.05	22.1	10.71	321	907
5:48:00	49.78	45.55	22.17	10.65	325.7	903.6
5:49:00	50.49	46.69	22.22	10.61	337.2	906.6
5:50:00	52.49	48.34	22.26	10.58	352.4	915.4
5:51:00	48.91	45.13	22.26	10.55	380.6	918.7
5:52:00	49.78	46.2	22.3	10.51	400.8	920
5:53:00	47.39	44.57	22.28	10.47	396.8	923.5
5:54:00	47.31	43.31	22.48	10.44	393.3	925.8
5:55:00	48.48	46.09	22.43	10.4	392	934.8
5:56:00	47.29	45.12	22.36	10.36	384.5	935
5:57:00	49.29	45.33	22.38	10.32	376.7	933.9
5:58:00	47.31	43.73	22.33	10.27	365.7	934.2
5:59:00	48.97	43.44	22.37	10.23	356.8	932.5
6:00:00	47.31	43.57	22.44	10.18	347.8	933.6
6:01:00	46.26	43.38	22.35	10.13	336	933.8
6:02:00	44.9	41.86	22.33	10.09	327.7	932.7
6:03:00	48.91	46.26	22.29	10.05	319.8	928.5
6:04:00	48.76	44.97	22.29	10.01	314	929.5
6:05:00	54.99	48.75	22.37	9.974	307.7	928.6
6:06:00	54.39	50.76	22.42	9.93	303.2	930.4
6:07:00	55.34	52.6	22.37	9.885	300.2	933.6
6:08:00	60.73	56.88	22.36	9.846	296.1	933.7
6:09:00	61	56.85	22.35	9.792	297.2	932.4
6:10:00	62.14	57.64	22.35	9.758	300.1	930.6
6:11:00	64.26	60.46	22.37	9.711	303.8	931.4
6:12:00	63.96	60.32	22.37	9.675	303.7	933.5
6:13:00	65.78	61.39	22.37	9.615	301.1	933.9
6:14:00	64.21	59.98	22.45	9.583	301.3	936.7
6:15:00	67.02	63.23	22.41	9.559	297.2	936.5

6:16:00	63.5	60.57	22.48	9.525	294.3	936.1
6:17:00	68.76	65.02	22.57	9.502	294	937.1
6:18:00	71.37	66.76	22.45	9.479	316.2	938.9
6:19:00	70.66	66.27	22.52	9.459	379.5	940
6:20:00	71.8	67.3	22.57	9.431	415.4	946.4
6:21:00	69.4	66.7	22.54	9.402	414.6	949
6:22:00	73.42	69.47	22.47	9.361	400.7	949.8
6:23:00	71.27	67.79	22.33	9.322	392.3	947.1
6:24:00	73.37	68.22	22.35	9.291	383.6	939.6
6:25:00	72.77	68.65	22.37	9.253	375	938.6
6:26:00	67.43	64.63	22.37	9.21	369.2	944
6:27:00	68	64.75	22.41	9.169	359.5	944.1
6:28:00	71.63	67.19	23	9.123	364.4	950.8
6:29:00	66.65	63.07	22.75	9.089	356	964.5
6:30:00	61.82	59.05	22.77	9.049	342.4	960.7
6:31:00	68.33	65.45	22.69	9.007	341	960
6:32:00	70.5	64.8	22.7	8.973	358.5	959.7
6:33:00	70.28	66.6	22.71	8.941	360	960.8
6:34:00	70.7	66.55	23	8.904	363.6	966.6
6:35:00	71.09	66.75	22.69	8.858	349.8	971.1
6:36:00	70.12	65.99	22.56	8.815	333.1	960.2
6:37:00	70.96	65.2	22.65	8.783	328.1	951.7
6:38:00	68.27	64.48	22.66	8.746	323.4	946.8
6:39:00	67.79	62.87	22.55	8.702	314.8	944.5
6:40:00	65.99	63.12	22.51	8.67	310.1	944
6:41:00	66.54	61.98	22.45	8.632	303.6	942
6:42:00	66.24	62.35	22.48	8.597	303.1	940.8
6:43:00	64.96	59.38	22.37	8.575	297.3	939
6:44:00	62.8	58.24	22.34	8.533	290.6	931.5
6:45:00	66.03	61.26	22.39	8.486	305.4	928.7
6:46:00	62.14	59	22.4	8.459	347.6	927.9
6:47:00	62.74	58.95	22.41	8.424	355.5	930.3
6:48:00	64.21	60.46	22.37	8.399	354.5	930.1
6:49:00	64.27	58.35	22.3	8.356	353.3	927.5
6:50:00	64.48	58.78	22.27	8.317	352	925.1
6:51:00	61.26	58.2	22.31	8.276	350.6	922.9
6:52:00	58.57	54.93	22.31	8.239	350	923.8
6:53:00	63.66	59.76	22.44	8.218	346.6	924
6:54:00	60.01	57.73	22.51	8.178	347.8	931.3
6:55:00	61.72	58.2	22.53	8.163	356.6	934.1
6:56:00	65.79	60.16	22.53	8.142	383.7	939.5
6:57:00	59.91	57.16	22.49	8.127	378.6	941.7
6:58:00	62.09	58.19	22.32	8.098	367.8	941
6:59:00	64.79	59.18	22.31	8.065	363.7	939.5
7:00:00	65.4	60.14	22.33	8.034	362.6	939.1

7:01:00	65.77	61.31	22.3	8.001	357.7	936.7
7:02:00	69.3	65.18	22.3	7.974	353.1	932.7
7:03:00	67.24	62.2	22.29	7.939	352.7	932.6
7:04:00	69.61	64.53	22.27	7.894	348.7	931.8
7:05:00	71.42	66.43	22.26	7.862	349.6	931.5
7:06:00	73.08	70.59	22.25	7.818	355.7	932.8
7:07:00	77.65	73.75	22.13	7.783	362.2	932.1
7:08:00	80.36	73.8	22.21	7.749	395.5	931.3
7:09:00	79.26	74.07	22.17	7.708	419.7	928.6
7:10:00	82.97	75.59	22.24	7.671	430.4	927.2
7:11:00	81.9	76.09	22.2	7.638	434.9	928.3
7:12:00	85.3	77.33	22.21	7.594	432.8	930.4
7:13:00	86.93	79.88	22.25	7.56	425.3	930.9
7:14:00	90.2	83.3	22.31	7.521	422.6	931
7:15:00	93.38	83.62	22.26	7.49	413.6	931
7:16:00	92.29	86.22	22.24	7.452	408.3	930.8
7:17:00	94.04	84.29	22.28	7.418	404.9	930.3
7:18:00	92.35	84.32	22.23	7.375	396.9	930.4
7:19:00	97.36	88.75	22.25	7.346	386.7	928.3
7:20:00	94.36	87.41	22.93	7.281	390.7	937.4
7:21:00	93.78	85.74	22.92	7.223	387.7	956.6
7:22:00	91.59	85.08	23.09	7.17	382.5	964.5
7:23:00	90.72	85.68	23.06	7.125	375.2	964.1
7:24:00	93.78	87.66	23.07	7.085	369.7	963.7
7:25:00	91.59	85.62	23.14	7.053	367.8	966.8
7:26:00	95.49	88.23	23.15	7.017	369	966.9
7:27:00	96.74	88.39	23.01	6.989	366.2	966.6
7:28:00	98.66	90.1	23.01	6.964	363.3	964
7:29:00	107	94.9	22.93	6.938	362.5	956.7
7:30:00	112.1	100.1	22.79	6.914	357.7	945.8
7:31:00	108.5	101.1	22.84	6.889	362.8	939.7
7:32:00	115.8	105.5	22.75	6.859	362.2	936.6
7:33:00	116.3	104.7	23	6.815	366.9	938
7:34:00	120.1	108.1	22.87	6.789	379.3	948.1
7:35:00	121.8	109.3	22.88	6.737	415.2	949.3
7:36:00	121	110.6	22.92	6.712	436	948.3
7:37:00	121.8	111.2	23.32	6.664	436.8	949.3
7:38:00	123.5	111.9	24.94	6.63	550.5	976.5
7:39:00	124.7	110.9	25.12	6.632	648.5	1009
7:40:00	136.5	124.9	25.25	6.627	619.7	1019
7:41:00	141.8	130.7	25.45	6.633	614	1034
7:42:00	148.3	132.3	25.24	6.635	598	1049
7:43:00	156.8	138.3	25.09	6.646	621.3	1053
7:44:00	205.4	179.2	25.06	6.649	648.6	1057
7:45:00	697.5	593.3	24.95	6.633	635.2	1061

7:46:00	1368	1071	25.01	6.608	637.2	1074
7:47:00	636.2	533.7	25.44	6.572	617.5	1086
7:48:00	595.4	509.6	25.42	6.56	595.9	1091
7:49:00	502.2	424.2	26.25	6.575	575.7	1073
7:50:00	484.5	413.7	27.17	6.606	580.5	1069
7:51:00	474.5	401.7	27.86	6.665	584.2	1089
7:52:00	462.4	395.6	28.1	6.756	584.4	1107
7:53:00	476.5	416.9	28.59	6.866	593.4	1134
7:54:00	502.8	442	28.81	7.006	600.5	1162
7:55:00	498.1	438	28.86	7.115	592.1	1165
7:56:00	478.6	416.7	28.82	7.204	587.9	1161
7:57:00	469.4	409.1	28.66	7.269	580.2	1157
7:58:00	457.4	399.5	28.36	7.308	568.4	1132
7:59:00	447	394	28.19	7.342	566.2	1109
8:00:00	448.4	391.9	28.09	7.372	564.4	1085
8:01:00	440.4	381.1	27.98	7.404	561.6	1070
8:02:00	430.9	376.4	27.97	7.443	564	1054
8:03:00	408	362	27.9	7.499	562.7	1041
8:04:00	422.7	360.4	27.85	7.555	558.3	1033
8:05:00	409.1	353.7	27.78	7.603	553.4	1024
8:06:00	397.9	351	27.71	7.657	544.1	1013
8:07:00	390.1	342.8	27.68	7.721	538.5	1001
8:08:00	388	337.2	27.61	7.77	533.1	987.8
8:09:00	384.1	330	27.59	7.827	533.4	976.8
8:10:00	369.3	325	27.6	7.892	535.3	968.4
8:11:00	370.9	326.6	27.59	7.958	539	958.7
8:12:00	351.6	315.2	27.62	8.023	541.3	951.6
8:13:00	345.9	306.1	27.58	8.105	538.2	942.2
8:14:00	341.8	303.5	27.63	8.175	542.1	934.5
8:15:00	334.6	298.3	27.65	8.261	543.9	924.1
8:16:00	325.6	296.2	27.77	8.35	545.4	916
8:17:00	321.4	287	27.88	8.443	546.1	907.5
8:18:00	327.2	291.9	28.01	8.556	544.7	901
8:19:00	315.9	281.6	28.15	8.662	543.8	894.9
8:20:00	306.5	274.1	28.17	8.797	544.2	891.8
8:21:00	303.1	271.5	28.27	8.934	543.3	887.8
8:22:00	294.3	264.8	28.41	9.065	540.6	881.9
8:23:00	283.1	259	28.83	9.19	541.6	877
8:24:00	288.2	254.7	29.14	9.313	543.1	879.4
8:25:00	281.4	250	29.32	9.447	541.3	878
8:26:00	266	239.6	29.45	9.567	540.5	874.2
8:27:00	272.2	247	29.52	9.687	541.4	871.1
8:28:00	266.9	241.9	29.56	9.824	548.2	868.2
8:29:00	269.2	240.8	29.5	9.947	555.5	866.1
8:30:00	265.8	235.4	29.54	10.06	561.4	862.3

8:31:00	264	235.3	29.51	10.18	564.2	856.9
8:32:00	260.7	235.1	29.5	10.3	565.4	848.4
8:33:00	261.8	236.7	29.42	10.41	565.3	842
8:34:00	261.8	236.2	29.37	10.53	566	836.3
8:35:00	266.2	238	29.26	10.64	573.1	829.3
8:36:00	253.1	230.9	29.16	10.75	583.6	827.1
8:37:00	252	229.1	29.07	10.86	590.3	819
8:38:00	267.6	238.8	28.93	10.97	598.3	812.4
8:39:00	256.9	234.6	28.85	11.07	600.8	812.1
8:40:00	257.2	231.3	28.72	11.17	601	813
8:41:00	261.1	234.9	28.71	11.27	601.7	808.7
8:42:00	261.4	233.4	28.56	11.37	600.3	802.7
8:43:00	256.6	236.3	28.46	11.46	599.1	800
8:44:00	253.7	233.2	28.36	11.56	599.2	799.9
8:45:00	254.1	232.8	28.32	11.66	599	800.6
8:46:00	249.1	229.1	28.32	11.74	598.6	806.4
8:47:00	245	223.6	28.26	11.84	599.6	812.8
8:48:00	253.9	224.8	28.21	11.93	597.7	820.9
8:49:00	252.2	231.2	28.14	12.01	586.9	820.9
8:50:00	250.1	227.2	27.98	12.1	581	819.3
8:51:00	238.7	222.6	27.89	12.18	578.6	814.8
8:52:00	244.9	225.4	27.79	12.27	578.7	808.1
8:53:00	255.8	229.3	27.71	12.36	575.6	806.5
8:54:00	244.9	225	27.61	12.45	572.7	806.9
8:55:00	245.2	224.7	27.51	12.53	565.1	804.3
8:56:00	254.3	232.1	27.37	12.61	556.7	800.3
8:57:00	253.7	230.3	27.21	12.71	553.9	794.3
8:58:00	255.7	237	27.1	12.8	548	786
8:59:00	262.7	240.1	27.5	12.91	571.4	782.4
9:00:00	253	230.7	27.97	13.03	596.1	789.3
9:01:00	245.8	228.3	27.88	13.15	602.3	803.4
9:02:00	254.3	233.6	28.11	13.22	601.8	810.5
9:03:00	256.9	238.3	28.04	13.31	589.1	816
9:04:00	248.5	229.9	28.44	13.39	593.5	819.1
9:05:00	258.6	237.5	28.56	13.49	599.5	836.8
9:06:00	257.8	236.4	28.54	13.54	601.9	840
9:07:00	274.8	247.1	28.47	13.6	600.6	838.4
9:08:00	265.2	242.2	28.34	13.7	607.7	850.2
9:09:00	276.5	253.1	28.48	13.76	619.8	853.6
9:10:00	283.1	255.8	27.93	13.83	649.5	856.5
9:11:00	295.9	269.3	27.7	13.86	644.7	847.7
9:12:00	313.2	278.5	27.77	13.9	653.9	852.1
9:13:00	301.8	271.4	28.01	13.95	665	862.9
9:14:00	310.1	278	27.97	14.02	662.5	868.5
9:15:00	332	298.5	27.41	14.08	656.7	867.1

9:16:00	334.4	300	28.53	14.15	722.3	869.5
9:17:00	337.9	301.4	27.75	14.2	732.5	876.5
9:18:00	357.3	314.1	27.62	14.23	737.2	876.1
9:19:00	363.6	327.4	27.69	14.25	729.7	872.8
9:20:00	383.4	334.7	28.34	14.3	746	875.8
9:21:00	367.3	324.6	28.37	14.39	744.7	894.7
9:22:00	374.3	330.8	28	14.5	732.9	903.5
9:23:00	391.7	347.1	27.57	14.6	716.2	898.5
9:24:00	377.6	338.9	28.03	14.7	711.5	893.7
9:25:00	359.6	322.7	28.6	14.78	717.5	893.6
9:26:00	368.4	331.5	27.9	14.9	706	895.4
9:27:00	346.4	313.2	28.69	14.98	698.5	892.7
9:28:00	333.8	300.9	29.2	15.05	703.2	896.4
9:29:00	328.6	295.9	29.48	15.12	702.8	900.5
9:30:00	313.3	286.9	29.64	15.19	706.7	906
9:31:00	308	282.8	29.59	15.27	702.5	906.4
9:32:00	311.8	285.1	29.8	15.33	698.2	908
9:33:00	312.5	283	30.01	15.4	700	917.7
9:34:00	306.9	277.2	29.95	15.46	693.4	926.2
9:35:00	309.7	282.3	29.75	15.52	677.5	923.9
9:36:00	302	268.2	29.84	15.59	671	917.9
9:37:00	285.9	259.9	29.83	15.66	661.5	910.1
9:38:00	288.2	262	29.68	15.7	638.6	901.3
9:39:00	291.9	264.2	29.64	15.78	620	891.9
9:40:00	280.6	254.2	29.51	15.83	602.5	889.5
9:41:00	278.2	255.1	29.33	15.9	577.2	878.6
9:42:00	274	248.4	29.18	15.95	564.3	865.7
9:43:00	267.6	248.9	29.18	16	555.3	861.6
9:44:00	265.4	240.7	29.11	16.06	552.7	853.4
9:45:00	257.7	235.1	29.37	16.12	552.8	849.9
9:46:00	259.3	235.2	29.27	16.19	550.3	847.7
9:47:00	264.5	238.5	28.87	16.23	539.8	843.1
9:48:00	279.4	249.8	28.25	16.3	519	839.8
9:49:00	258	236.3	28.74	16.36	520.3	850
9:50:00	242.9	224.3	28.82	16.43	521.3	853
9:51:00	246.5	223.8	29	16.5	513.2	853
9:52:00	234.5	214.7	29.11	16.56	508.9	849.5
9:53:00	229.1	214.3	29.18	16.62	522.1	850.7
9:54:00	236.3	217.5	28.84	16.67	549.1	850.7
9:55:00	249.6	226.1	28.1	16.73	542	848.7
9:56:00	251.6	227.5	27.92	16.79	535.9	850.7
9:57:00	235.4	218.8	28.73	16.86	536	853.2
9:58:00	226.1	211.6	28.05	16.89	566.4	853.4
9:59:00	245.2	225.4	27.35	16.89	646.5	849.9
10:00:00	241.5	224.8	27.78	16.93	707.4	853.6

10:01:00	239.2	218.3	28.16	16.97	725.4	874.5
10:02:00	238.7	217.7	28.51	17.01	717.7	938
10:03:00	234.6	211.3	28.85	17.04	710.1	1042
10:04:00	243.6	220.4	28.4	17.07	695	1043
10:05:00	273.2	248.9	28.51	17.11	709.8	1020
10:06:00	315.2	289.2	28.3	17.13	715.4	998.4
10:07:00	288.2	267.3	27.53	17.16	682.9	966.1
10:08:00	308	286.1	27.37	17.19	648.1	942.1
10:09:00	313.3	287.9	27.38	17.22	628.9	926.7
10:10:00	298	274.2	27.98	17.26	638	935.5
10:11:00	308.8	283.8	26.82	17.29	607.1	951.1
10:12:00	298.8	278.1	26.53	17.28	602	913.9
10:13:00	296.1	272.4	26.61	17.32	671.7	898.1
10:14:00	295.9	274.4	26.6	17.35	635.5	911.2
10:15:00	292.4	269.5	26.13	17.38	572.3	915.5
10:16:00	284.9	264.1	26.32	17.39	547	908.2
10:17:00	281.6	256.9	26.63	17.4	541.6	905.2
10:18:00	283.2	260.9	26.89	17.42	536	912.8
10:19:00	279.9	256.1	27.59	17.45	532.2	930.5
10:20:00	271.5	253.6	27.55	17.49	534.5	963.1
10:21:00	263.2	241.5	27.7	17.5	522.5	960.7
10:22:00	276.2	250.3	27.67	17.53	511	952.5
10:23:00	264.7	241.4	27.45	17.55	500.3	944.6
10:24:00	258.2	237.6	27.34	17.57	491.9	935.8
10:25:00	258.2	239.8	27.11	17.58	474.7	925.3
10:26:00	253.7	232.5	26.96	17.59	457.1	911.7
10:27:00	247.4	227.7	27.08	17.61	447.9	902
10:28:00	245.4	225.6	26.71	17.62	441.2	894.3
10:29:00	243.3	222	27.02	17.64	445.1	898.6
10:30:00	235.6	219.9	26.92	17.67	449.3	916.1
10:31:00	228.9	210.3	26.51	17.7	448.6	926
10:32:00	227	212	27.33	17.71	450	919.1
10:33:00	230.8	213.9	27.16	17.71	447.1	918.8
10:34:00	221	205.2	26.95	17.72	445.2	924.7
10:35:00	219.3	203.5	26.45	17.71	439.7	924.5
10:36:00	215.7	201.1	26.4	17.73	444.2	916.3
10:37:00	210	195.4	26.49	17.76	445	907.2
10:38:00	207.5	194.1	26.39	17.79	443.5	913.4
10:39:00	207.4	189	26.88	17.8	441.6	919.8
10:40:00	205.2	189.8	26.34	17.8	426.3	929.9
10:41:00	194.7	180.8	27.35	17.79	423.8	939.4
10:42:00	194.6	179.4	27.09	17.8	434.7	954.1
10:43:00	196.3	180.7	27.43	17.81	442.5	955.1
10:44:00	189.5	175.6	27.05	17.81	432.5	960.3
10:45:00	186.5	176.1	26.43	17.79	411	953.2

10:46:00	180.2	166.4	26.28	17.8	434.6	949.9
10:47:00	173.7	161.1	26.21	17.81	449.6	964.1
10:48:00	175.3	163.7	26.37	17.84	444.3	967.8
10:49:00	174.9	161.1	26.48	17.86	446.4	968.5
10:50:00	173.5	158.7	26.61	17.89	462.1	983
10:51:00	174.4	157.4	26.69	17.93	457.1	996.1
10:52:00	168.4	151.1	26.99	17.97	457.9	1008
10:53:00	163.8	145.4	27.34	17.99	453.8	1022
10:54:00	158.5	145.5	27.66	18	448.9	1037
10:55:00	157.9	145.3	27.34	18.01	427.4	1034
10:56:00	159.8	148.3	27.33	18	420.5	1031
10:57:00	158.6	146	27.51	18	418.7	1030
10:58:00	151.7	140.4	27.59	18.01	422.3	1031
10:59:00	147.8	139.1	27.42	18.03	435.6	1040
11:00:00	145.9	133.4	27.58	18.03	442.4	1067
11:01:00	141	130.8	27.54	18.05	441.2	1093
11:02:00	137.4	124.2	26.85	18.07	434	1108
11:03:00	136.1	123.1	26.65	18.06	417.5	1117
11:04:00	134.4	122.8	27.35	18.06	418.8	1122
11:05:00	132.7	119.5	27.87	18.1	428.5	1148
11:06:00	127.4	117.4	27.06	18.1	418.8	1160
11:07:00	129.5	118.2	26.21	18.05	387.3	1136
11:08:00	128.3	116.9	26.88	18.01	379	1115
11:09:00	134.9	123.4	26.7	18	369.9	1114
11:10:00	127.7	117.4	26.8	17.99	362.3	1100
11:11:00	128.4	115.5	26.74	17.98	353.9	1076
11:12:00	122.8	112.2	26.8	17.96	352	1052
11:13:00	125.8	113.8	26.75	17.95	346.5	1036
11:14:00	121.3	110.6	26.67	17.93	342.1	1017
11:15:00	121.8	110	26.72	17.93	343.7	997.9
11:16:00	114	105.3	26.72	17.92	340.5	985.6
11:17:00	121.6	107.8	26.73	17.93	339.9	969.6
11:18:00	117.2	106.6	26.66	17.94	345.2	956.7
11:19:00	120.1	108.9	26.62	17.95	341.5	941.1
11:20:00	111.7	102	26.65	17.94	329.2	929
11:21:00	113.1	104.5	26.65	17.95	322.6	922.2
11:22:00	113.6	102.6	26.6	17.94	319.2	911.4
11:23:00	110.7	100.7	26.65	17.95	316.3	902.4
11:24:00	110.5	99.07	26.55	17.94	311.8	888.9
11:25:00	108.1	100.1	26.55	17.96	312.8	870.9
11:26:00	107	97.28	26.39	17.94	313.6	856.5
11:27:00	104.4	95.28	26.33	17.95	302.3	838
11:28:00	99.67	93.54	26.3	17.95	294.6	820.4
11:29:00	98.64	93	26.32	17.95	290.1	809.9
11:30:00	99.23	92.48	26.31	17.95	288	803

11:31:00	97.66	91.64	26.31	17.96	284.4	792.2
11:32:00	95.96	91.45	26.42	17.95	280.6	781.9
11:33:00	94.41	89.58	26.5	17.97	284.8	776.9
11:34:00	96.84	88.85	26.57	17.99	286.2	767.5
11:35:00	97.61	89.64	26.69	18.01	286.2	760.9
11:36:00	91.91	87.3	26.76	18.04	282.9	753.9
11:37:00	92.46	86.66	26.82	18.07	282.1	742.7
11:38:00	95.23	86.47	26.95	18.11	280.9	734.7
11:39:00	90.83	84.92	27.05	18.14	284	732.8
11:40:00	85.19	81.5	27.14	18.19	284.5	728.4
11:41:00	87.24	81.44	27.25	18.23	284	720.5
11:42:00	91.16	86.55	27.31	18.29	284.9	713.2
11:43:00	84.08	80.24	27.48	18.33	285.8	709.9
11:44:00	86.76	80.31	27.54	18.39	281.9	707.5
11:45:00	85.84	79.15	27.58	18.44	280	705.9
11:46:00	81.5	76.73	27.75	18.49	278.9	703.1
11:47:00	81.99	77.65	27.84	18.55	277.1	700.4
11:48:00	80.15	74.13	27.83	18.6	276.9	695.5
11:49:00	79.15	73.24	27.91	18.66	274.8	686.4
11:50:00	75.89	70.34	27.93	18.71	272.3	679.1
11:51:00	74.24	69.52	27.88	18.75	269.4	671.7
11:52:00	74.67	69.47	27.94	18.79	266.1	665.7
11:53:00	74.17	68.78	28.13	18.84	266	659.5
11:54:00	71.69	65.94	28.17	18.89	264.7	653.7
11:55:00	69.87	65.56	28.28	18.94	263.8	648.7
11:56:00	69.36	63.77	28.52	18.98	264.7	645.2
11:57:00	68.06	62.9	28.71	19.04	264.8	642.3
11:58:00	66.13	61.83	28.61	19.1	262.9	638.7
11:59:00	68.71	60.95	28.63	19.15	262.6	633.2
12:00:00	62.96	58.95	28.91	19.19	263	629.6
12:01:00	64.11	60.48	29.13	19.26	262.6	626.5
12:02:00	60.9	57.54	29.2	19.31	262.7	622.8
12:03:00	62.14	58.15	27.56	19.35	254	615.1
12:04:00	68.98	63.77	27.15	19.4	243.7	610.2
12:05:00	65.04	58.51	27.82	19.5	247.6	637.8
12:06:00	65.51	58.25	28.28	19.61	252.2	664.2
12:07:00	62.42	56.5	29.01	19.7	259.6	682.5
12:08:00	60.84	57.1	28.94	19.79	270	694.1
12:09:00	61.78	55.66	29.16	19.86	284	712
12:10:00	58.19	52.22	29.25	19.94	312.5	745
12:11:00	61.57	53.17	29.82	20.01	443.6	769.8
12:12:00	57.48	50.65	30.58	20.11	447.4	801.6
12:13:00	55.55	50.57	30.76	20.17	449	847.8
12:14:00	59.27	53.47	31.4	20.22	473.9	1049
12:15:00	53.25	48.7	31.36	20.26	451.4	1032

12:16:00	52.28	47.46	30.7	20.3	416.6	959.4
12:17:00	55.91	50.49	31.26	20.35	401.4	920.4
12:18:00	57.54	50.11	30.55	20.39	396.4	960.8
12:19:00	59.75	52.23	29.02	20.42	352.5	895.2
12:20:00	56.5	51.52	28.51	20.48	351.7	828.3
12:21:00	51.2	46.73	29.13	20.61	384.8	823.7
12:22:00	56.99	52.11	28.81	20.69	381.6	827.4
12:23:00	56.9	50.31	28.7	20.77	348.4	836.2
12:24:00	52.17	47.61	28.39	20.84	332.7	874.6
12:25:00	54.46	47.88	29.36	20.88	335.3	895.4
12:26:00	52.44	47.94	30.11	20.95	349.8	961.5
12:27:00	50.81	45.28	33.35	21.03	357.7	942.7
12:28:00	50.52	46.94	35.13	21.13	374.3	935.2
12:29:00	55.42	47.61	33.22	21.18	370.1	921.9
12:30:00	64.53	53.11	33.9	21.18	359.5	913.6
12:31:00	82.32	62.74	34.87	21.2	368	925.7
12:32:00	90.56	76.68	35.92	21.26	382.8	963.5
12:33:00	118.2	103	36.57	21.31	379.8	972
12:34:00	112.8	97.66	36.08	21.33	374.1	963.4
12:35:00	102.3	84.7	36.23	21.36	371.3	950.5
12:36:00	106.4	91.6	36.47	21.41	362.2	940
12:37:00	112.4	100.9	36.7	21.46	364.8	937.9
12:38:00	130	116.3	38.94	21.49	369.1	937.9
12:39:00	153.5	136.7	38.46	21.53	380.1	953.4
12:40:00	142.2	128.7	37.6	21.56	373.4	953.2
12:41:00	139.9	124.3	36.12	21.61	365	943.7
12:42:00	132.5	117.3	35.88	21.63	369.1	949.2
12:43:00	141.1	126.6	35.56	21.66	374.7	984.4
12:44:00	132	117	34.67	21.68	357.9	969.5
12:45:00	123	110.8	36.35	21.71	353.4	951.7
12:46:00	150	134.5	36.95	21.74	357.5	950.1
12:47:00	159.4	145.1	39.11	21.75	357.2	943
12:48:00	149.9	136.2	39.94	21.78	358.9	941.7
12:49:00	158.9	138.8	41.34	21.83	368.2	933.7
12:50:00	147	134.6	40.81	21.88	373.1	917.4
12:51:00	143.4	131.7	40.92	21.9	372.5	891.1
12:52:00	164.6	150.1	42.52	21.95	376.9	878.5
12:53:00	149.6	135.2	42.04	22	371.7	875.4
12:54:00	145.9	131.5	42.14	22.06	370.9	871.8
12:55:00	164.5	146.1	41.66	22.09	360	866.8
12:56:00	161.1	147.7	41.35	22.12	361.5	866.6
12:57:00	162.6	144.2	40.92	22.14	374.5	879.6
12:58:00	175	156.1	42.76	22.19	380.2	900.1
12:59:00	178.8	158.9	41.21	22.22	384.3	918.9
13:00:00	182.5	161.7	40.55	22.26	389	914.9

13:01:00	188.4	167.3	40.1	22.27	402.8	922.2
13:02:00	187.5	169.8	39.22	22.28	394.2	928.8
13:03:00	193.4	174.1	39.59	22.32	399.3	953.2
13:04:00	186.3	167.5	38.22	22.34	388.2	956.7
13:05:00	193.9	172.4	38.39	22.35	391.6	949.4
13:06:00	184.2	164.9	40	22.4	401.3	948.3
13:07:00	205.5	183.4	40.6	22.44	413.3	950.4
13:08:00	208.8	185.6	40.85	22.5	406.2	936
13:09:00	187.9	171.6	39.58	22.53	387.3	921.1
13:10:00	197.4	180.7	39.93	22.56	377.2	915.6
13:11:00	203	184.5	41.37	22.58	435.9	1074
13:12:00	196.2	179.8	40.48	22.59	452.5	1127
13:13:00	215	194.1	41.81	22.6	412.8	1020
13:14:00	212.4	191.3	40.38	22.64	381	990.6
13:15:00	213.5	192.4	40.05	22.65	354.1	941.8
13:16:00	216	194.8	39.3	22.66	344.8	913
13:17:00	228.6	204.9	38.6	22.66	333.7	897
13:18:00	220.8	199.4	38.77	22.66	330.9	892.5
13:19:00	218.3	194.3	37.99	22.67	326.6	892.1
13:20:00	215.1	192.7	38.49	22.68	325.5	892.2
13:21:00	213.9	193.6	37.86	22.69	320.2	890.1
13:22:00	199.5	178.5	37.13	22.68	317.9	883
13:23:00	211	187.3	36.83	22.68	375.8	880.2
13:24:00	228.9	206.5	38.94	22.69	439.7	894.5
13:25:00	244	221.6	39.42	22.73	475.1	906.3
13:26:00	235.7	213.7	38.34	22.77	466.7	907.5
13:27:00	220.1	197.3	36.66	22.78	433.3	893.7
13:28:00	210.2	186.9	35.85	22.76	403.5	873.9
13:29:00	201	182.1	35.49	22.74	381.3	864.2
13:30:00	209.4	187.5	35.59	22.73	377	861
13:31:00	210.7	193.2	35.38	22.76	370.5	859.7
13:32:00	205.3	186.5	35	22.77	365.8	856.3
13:33:00	213.5	193.6	35.06	22.78	351.4	852.8
13:34:00	240	210.1	36.1	22.76	355.2	853.3
13:35:00	226.7	204	34.9	22.74	347.6	850.8
13:36:00	213.9	194.3	34.12	22.7	333.6	841.5
13:37:00	206.6	192.9	33.64	22.67	322.8	835.9
13:38:00	214.3	189.1	33.68	22.67	317.1	833.9
13:39:00	212.7	193.8	33.9	22.66	313.7	833.3
13:40:00	215.4	197	33.33	22.64	312.9	833.8
13:41:00	221.4	199.4	33.17	22.63	304.7	833.6
13:42:00	221.6	198.7	33.38	22.63	303.5	831.2
13:43:00	221.2	198.6	33.51	22.63	301.1	827.1
13:44:00	227	200.7	33.61	22.63	298.7	823.9
13:45:00	224.1	199.8	33.28	22.64	298.1	824.3

13:46:00	228.7	205.7	33.85	22.62	302	825
13:47:00	220.4	199.8	33.14	22.61	296.1	823.9
13:48:00	226.3	203.2	33.6	22.61	287.5	820.3
13:49:00	247.4	221.7	33.81	22.62	297.6	816.5
13:50:00	223.8	199.9	33.7	22.62	293	812.1
13:51:00	218.5	200.7	33.08	22.61	290.7	809.9
13:52:00	218	199.7	32.92	22.6	283	808.7
13:53:00	225.2	204.6	32.7	22.58	281.9	807.5
13:54:00	217.4	200.1	32.69	22.57	276.6	806.4
13:55:00	231.6	209.8	32.83	22.57	275	805
13:56:00	231.8	208.7	32.66	22.56	275.4	805.7
13:57:00	231.7	211.8	32.56	22.55	273.1	805.8
13:58:00	240.7	216	32.45	22.53	270.5	803.8
13:59:00	246.2	219.2	33.45	22.53	279.5	805.8
14:00:00	237.6	210.6	31.99	22.53	277	807.7
14:01:00	236	211.7	32.78	22.5	276.4	806.2
14:02:00	237.8	213.7	32.2	22.49	276.1	807.4
14:03:00	241.8	219.8	33.04	22.48	279.4	807.6
14:04:00	253.8	228.8	33.04	22.49	288.3	806.3
14:05:00	281.4	252.1	34.62	22.47	300.4	807.2
14:06:00	276.4	245.8	34.38	22.48	302	813.3
14:07:00	268.2	240.7	33.6	22.47	295.1	816
14:08:00	257.6	232.7	33.1	22.44	290.3	812.5
14:09:00	272.3	248.1	33.72	22.42	304.2	812.2
14:10:00	262.8	242.3	33.58	22.41	312.9	815.1
14:11:00	265.7	236.3	33.07	22.41	314	815.2
14:12:00	252.7	228.4	32.88	22.41	308.1	812.6
14:13:00	257.2	235	33.9	22.42	308	811.3
14:14:00	274.7	254.5	34.32	22.41	316.1	822.1
14:15:00	270.2	244.5	34.35	22.45	320.4	851
14:16:00	260.1	234.4	33.04	22.47	313.9	844.5
14:17:00	247.5	225.7	32.47	22.42	309.8	827.5
14:18:00	260.3	234.1	33.64	22.4	315.5	821.5
14:19:00	258	233.1	32.39	22.4	319.9	827
14:20:00	235.3	217.7	32.21	22.38	311.9	822.3
14:21:00	241.1	216.7	32.13	22.36	308.2	817.6
14:22:00	248.2	226.7	33.05	22.33	314.2	814.6
14:23:00	247.2	220.9	32.45	22.31	321.4	817
14:24:00	241.6	218.3	32.08	22.28	306.3	810.3
14:25:00	274.8	241.5	32.79	22.26	309.2	811.3
14:26:00	252.8	229.9	32.07	22.23	307.7	812.3
14:27:00	246.2	223.9	32.75	22.21	304.3	811.7
14:28:00	247.3	225.9	32.06	22.17	298.8	811.4
14:29:00	249.1	228.5	32.48	22.15	297.8	810.3
14:30:00	255	230.9	32.53	22.13	297.2	810

14:31:00	258.1	236.2	32.16	22.11	297	808.9
14:32:00	252.9	230	32.11	22.1	322.3	808
14:33:00	255.1	235.1	32.48	22.1	439	809.7
14:34:00	262.6	234.8	32.26	22.06	495.3	811.4
14:35:00	282.2	252.8	33.88	22.05	549.5	816.5
14:36:00	273.5	245.3	33.21	22.04	541.7	818.2
14:37:00	267.9	241.7	32.83	22.01	510.8	817.2
14:38:00	294.1	260.4	33.8	22.03	476.2	824
14:39:00	291.7	265.7	33.27	22.03	448.7	833.8
14:40:00	277.7	254.7	32.98	22.03	421	829.8
14:41:00	268.7	243.4	32.56	22.03	400.1	827.7
14:42:00	276.4	250.2	32.39	22.01	386.3	824.7
14:43:00	285.4	256.3	32.74	21.98	374.8	820
14:44:00	289.1	263.5	33.29	21.98	366	823.4
14:45:00	271.7	243.6	31.79	21.96	352	820.6
14:46:00	265.7	237.7	32.2	21.94	333.1	808.4
14:47:00	279.5	252.1	32.6	21.93	336.8	806.5
14:48:00	281.6	257.6	32.52	21.9	330.5	806
14:49:00	278.9	252.9	32.69	21.87	328.8	807.2
14:50:00	293.2	267	33.63	21.86	363	810.7
14:51:00	290.3	264.6	32.74	21.86	402.2	815.3
14:52:00	285.7	259	33.16	21.84	475.1	813.7
14:53:00	284.3	256.5	32.34	21.8	527.5	812
14:54:00	289.6	259	32.41	21.81	527	806.1
14:55:00	279.5	256.7	32.04	21.79	504.6	803.2
14:56:00	276.8	251.7	32.09	21.77	478.1	801.1
14:57:00	279.7	251.8	31.98	21.75	460	794.8
14:58:00	288.9	257.2	32.39	21.75	444	791.7
14:59:00	271	245.5	31.45	21.73	420.8	789
15:00:00	268	245.2	31.79	21.72	407.8	784
15:01:00	277.6	254.4	32.5	21.7	397.7	783.6
15:02:00	278.8	250.2	31.96	21.66	385.7	784.3
15:03:00	277.9	250.1	31.7	21.61	375.4	783.4
15:04:00	259.5	233.9	31.91	21.6	363.7	779.5
15:05:00	276.9	252.9	32.44	21.61	351.7	780.4
15:06:00	265.7	243	31.84	21.6	339.3	781
15:07:00	280.8	253.7	32.16	21.58	324.6	781.6
15:08:00	271.3	247.3	32.05	21.57	320.9	781.9
15:09:00	276.8	250.3	31.58	21.56	303.7	780.9
15:10:00	269.5	245.9	31.13	21.53	288.7	779.6
15:11:00	256	231.6	30.67	21.52	272.5	775.3
15:12:00	268	242.9	31.34	21.51	283.4	766.9
15:13:00	261.3	234.9	31.9	21.54	355.9	780.1
15:14:00	260.9	237.4	31.42	21.54	375	783.8
15:15:00	247.5	223.7	31.19	21.55	389.6	798

15:16:00	243	219.7	31	21.58	380.3	825.4
15:17:00	248.2	223.7	31.08	21.57	380.2	827.6
15:18:00	242.5	221.7	31.3	21.57	403.7	828.5
15:19:00	245.4	221.1	31.26	21.6	459.7	841.4
15:20:00	232.1	212.8	30.9	21.58	476.8	855
15:21:00	237.1	218.1	31.07	21.56	492.2	866.7
15:22:00	239.8	215.6	30.93	21.55	469	874.2
15:23:00	245.4	223.7	32.06	21.52	597	889.9
15:24:00	252.6	224.8	32.07	21.5	1581	896.6
15:25:00	250.4	227.3	32.33	21.48	991.8	904.7
15:26:00	243.1	223.5	32.12	21.46	616	907.7
15:27:00	242.8	221.7	32.25	21.47	463.7	906.3
15:28:00	235.1	216	31.77	21.48	409.2	895
15:29:00	220.7	204.3	31.64	21.47	387.8	879.5
15:30:00	215.4	199.7	31.43	21.48	377.1	874.1
15:31:00	219.7	201.3	31.29	21.48	363	875.6
15:32:00	223.4	199.8	30.84	21.49	351.2	879.6
15:33:00	222.4	202.2	30.55	21.49	340.7	873
15:34:00	221.4	204.9	30.76	21.46	330.7	857.2
15:35:00	234.4	211.9	31.24	21.45	328.3	863.2
15:36:00	242.3	217.1	31.48	21.47	332.2	880.2
15:37:00	229.6	209.3	30.96	21.48	321.8	866.3
15:38:00	228.5	206.6	31.11	21.47	358.5	876.6
15:39:00	239.3	218.3	31.1	21.44	367	877.4
15:40:00	236.5	210.5	31.17	21.4	354.1	871.2
15:41:00	245.1	222.4	31.39	21.38	336	858.6
15:42:00	246.9	224.2	31.34	21.38	331.1	863.2
15:43:00	228.4	205.6	30.61	21.4	318.6	866.1
15:44:00	214.6	195.8	30.81	21.45	308	893.3
15:45:00	206.2	188.9	30.15	21.49	297.9	935.2
15:46:00	182.7	170.3	29.65	21.51	285.9	912.7
15:47:00	180.5	165	29.2	21.49	274.7	892.1
15:48:00	177.8	161.7	29.13	21.5	268	891
15:49:00	163	148.1	28.93	21.52	259.8	891.2
15:50:00	153.6	142.1	28.54	21.52	250.3	877.4
15:51:00	150	134.1	28.27	21.52	245	887.5
15:52:00	135.4	125.1	28.5	21.52	240.4	896.8
15:53:00	132.1	121.4	28.56	21.53	245.1	938.3
15:54:00	123.6	112.7	28.15	21.55	245.1	993.8
15:55:00	119.2	108.7	27.13	21.53	234.5	958.9
15:56:00	105.3	98.1	26.89	21.52	233.4	914.5
15:57:00	105.1	96.31	27.06	21.49	230.1	892.7
15:58:00	90.77	83.56	27.39	21.5	224.9	883
15:59:00	87.2	76.14	27.79	21.51	224.7	885.2
16:00:00	83.35	75.63	28.04	21.52	220.1	888.3

16:01:00	84.16	77.65	28.21	21.49	220.2	885.5
16:02:00	76.25	68.68	27.92	21.45	215.4	875.9
16:03:00	74.67	66.48	27.98	21.45	210.2	865.4
16:04:00	76.51	67.64	27.89	21.45	207.9	864
16:05:00	68.43	63.61	27.94	21.46	204.4	863.7
16:06:00	64.21	58.25	28	21.49	201.7	862.4
16:07:00	59.32	54.82	27.64	21.49	194.5	859.9
16:08:00	56.29	52.11	27.78	21.46	190.5	859.4
16:09:00	51.82	46.48	27.87	21.4	185.5	857.1
16:10:00	53.58	48.26	28.24	21.37	184.8	856.6
16:11:00	47.31	42.07	28.32	21.35	185.4	865.8
16:12:00	44.36	41.16	27.83	21.32	182.2	870.5
16:13:00	44.41	38.77	27.54	21.29	179	872.1
16:14:00	39.99	35.27	27.63	21.27	180.1	874.1
16:15:00	41.48	37.47	27.15	21.24	186.3	872.6
16:16:00	35.69	32.63	26.81	21.21	193.4	862.9
16:17:00	36.71	32.48	27.43	21.21	199.8	859.5
16:18:00	33.3	31.18	27.74	21.22	205.3	858.5
16:19:00	36.52	32.37	28.69	21.25	212.9	862.1
16:20:00	33.84	31.94	29.2	21.28	222.8	872
16:21:00	31.69	28.42	29.8	21.27	238.6	870.8
16:22:00	28.58	25.65	30.8	21.27	241.7	870.1
16:23:00	29.66	26.68	31.03	21.28	240.9	881.7
16:24:00	26.82	23.96	30.67	21.31	234.5	888.7
16:25:00	25.97	23.26	31.19	21.29	235	895.6
16:26:00	24.94	21.2	32.39	21.22	234.9	896.3
16:27:00	24.07	21.47	32.52	21.16	234.9	902.3
16:28:00	26.25	23.26	31.85	21.12	227.8	906.3
16:29:00	23.43	20.93	32.6	21.11	226.5	925.9
16:30:00	27.13	22.41	32.92	21.12	228.9	952.2
16:31:00	25.05	21.42	32.84	21.11	230.5	970.8
16:32:00	21.99	19.3	32.7	21.11	225.4	974.6
16:33:00	21.58	18.33	33.31	21.1	227	969.9
16:34:00	23.75	20.55	32.7	21.12	237.9	972.9
16:35:00	24.07	20.9	33.33	21.12	252.7	983
16:36:00	23.48	19.09	33.88	21.09	262.8	992.8
16:37:00	17.84	15.56	33.31	21.1	271.5	995.5
16:38:00	18.41	15.09	32.71	21.1	273.1	1003
16:39:00	18.65	15.83	32.76	21.08	271	1010
16:40:00	22.4	18.27	32.88	21.06	271.3	1021
16:41:00	21.37	18.57	32.93	21.04	269.2	1023
16:42:00	16.39	14.47	33.01	21.01	269	1021
16:43:00	20.71	17.14	33.25	20.99	271.4	1039
16:44:00	18.38	14.7	33.85	20.99	314.3	1075
16:45:00	19.25	15.29	33.65	20.99	315.4	1070

16:46:00	15.92	13.64	34.36	21.01	312.4	1068
16:47:00	18.55	15.51	34.15	21.02	324.2	1230
16:48:00	18.26	14	33.94	21.02	321.4	1197
16:49:00	18.55	14.26	33.56	21.01	308.4	1174
16:50:00	15.15	12.09	33.86	20.99	300	1165
16:51:00	15.35	11.66	34.25	20.98	301.6	1160
16:52:00	16.18	13.69	34.1	20.98	299.9	1150
16:53:00	15.78	12.42	34.29	20.97	297.6	1145
16:54:00	15.89	12.53	34.42	20.96	293	1144
16:55:00	14.99	12.29	34.31	20.96	289.7	1134
16:56:00	16.54	13.45	34.17	20.96	285	1121
16:57:00	14.94	12.76	34.28	20.96	287.7	1157
16:58:00	11.66	10.25	34.13	20.96	286.6	1186
16:59:00	13.29	10.95	34.09	20.95	290.1	1189
17:00:00	14.37	11.88	34.27	20.95	381	1237
17:01:00	12.19	11.15	33.87	20.95	437.7	1277
17:02:00	11.17	10.14	33.61	20.93	378.3	1234
17:03:00	14.21	10.48	33.65	20.91	332.9	1198
17:04:00	11.39	9.273	33.59	20.89	321.8	1199
17:05:00	9.285	8.299	34.12	20.88	320.8	1203
17:06:00	9.49	8.188	33.85	20.88	317.3	1187
17:07:00	11.28	8.297	33.87	20.87	351.5	1186
17:08:00	11.71	8.839	33.98	20.86	368.3	1224
17:09:00	9.544	7.625	33.78	20.86	342.7	1199
17:10:00	8.351	7.321	33.94	20.86	329	1167
17:11:00	10.79	8.092	33.84	20.87	330.7	1183
17:12:00	9.978	6.724	34.11	20.85	351.6	1399
17:13:00	8.568	6.562	33.91	20.84	352.6	1439
17:14:00	10.27	7.262	33.75	20.86	341.3	1400
17:15:00	8.676	6.182	33.56	20.85	339.8	1351
17:16:00	7.417	5.861	33.25	20.83	351.6	1295
17:17:00	8.243	6.453	34.66	20.83	375.2	1234
17:18:00	7.106	6.38	33.53	20.87	368.6	1201
17:19:00	8.459	6.345	33.06	20.85	356	1173
17:20:00	8.622	6.995	32.65	20.84	449.7	1173
17:21:00	12.4	9.388	32.13	20.85	739.5	1191
17:22:00	12.5	9.803	31.77	20.81	837.7	1211
17:23:00	13.34	10.03	31.71	20.78	732.8	1214
17:24:00	17.9	11.93	31.9	20.77	719.8	1216
17:25:00	15.94	11.39	32.78	20.71	702.5	1217
17:26:00	15.4	11.77	32.06	20.66	673.6	1211
17:27:00	18.98	12.45	31.48	20.58	637	1205
17:28:00	16.7	12.04	31.56	20.49	612.6	1188
17:29:00	16.18	12.6	32.01	20.43	583.6	1171
17:30:00	18.93	15.08	31.61	20.36	560.2	1157

17:31:00	24.78	18	31.66	20.3	537.8	1148
17:32:00	35.17	29.72	30.72	20.25	483.7	1136
17:33:00	38.94	31.83	30.55	20.2	445.5	1099
17:34:00	44.92	35.84	31.23	20.14	449.4	1075
17:35:00	53.11	43.52	30.43	20.1	430.7	1069
17:36:00	64.04	54.06	31.74	20.06	444.8	1053
17:37:00	61.39	51.68	32.05	20.01	450.8	1033
17:38:00	61.78	49.64	30.89	19.98	416.3	1021
17:39:00	56.23	47.39	30.89	19.95	392.8	1020
17:40:00	56.07	48.65	31.92	19.92	399.6	1018
17:41:00	57.48	48.32	31.41	19.89	391.4	1025
17:42:00	128.7	112	30.92	19.9	370	1049
17:43:00	138	122.4	31.07	19.88	363.1	1055
17:44:00	212.2	185	30.81	19.82	405.4	1046
17:45:00	391.4	337.6	31.11	19.77	438	1045
17:46:00	445.6	377.4	31.8	19.74	435.8	1047
17:47:00	433.3	381.9	32.27	19.72	455	1053
17:48:00	478.1	405.6	31.48	19.7	447.8	1056
17:49:00	487.1	412	31.1	19.68	429.8	1058
17:50:00	507.7	421.8	31.03	19.68	419	1071
17:51:00	493.5	412.8	31.54	19.67	413.1	1078
17:52:00	476.5	401.9	30.56	19.66	388.9	1083
17:53:00	479.5	400.6	30.58	19.65	377.5	1074
17:54:00	434.5	368.4	30.85	19.62	390.3	1068
17:55:00	433.4	372.1	31.16	19.62	404.5	1080
17:56:00	415.8	348.7	31.16	19.63	408	1103
17:57:00	381.8	330.6	31.62	19.61	417.3	1110
17:58:00	371.2	326.6	31.81	19.61	419.3	1115
17:59:00	411.4	354.3	32.36	19.61	418.8	1127
18:00:00	415.8	353.1	32.71	19.6	417.8	1144
18:01:00	408	352.7	31.97	19.58	416.4	1160
18:02:00	417.3	357.6	31.23	19.58	409.6	1157
18:03:00	408.9	360.8	30.85	19.57	402.5	1148
18:04:00	402.4	353.9	30.63	19.56	403.7	1142
18:05:00	386	347	30.5	19.55	407.5	1142
18:06:00	385.4	339.7	30.4	19.56	409.7	1141
18:07:00	378.6	337.2	30.36	19.55	415	1141
18:08:00	413.3	361.2	30.69	19.54	481.1	1143
18:09:00	762.1	695.1	31.23	19.55	734.4	1165
18:10:00	880.5	801.4	30.65	19.53	824.3	1181
18:11:00	795.4	722.5	31.23	19.52	843.1	1221
18:12:00	914.1	823.9	31.07	19.51	844.6	1291
18:13:00	921	837.1	30.95	19.49	820.7	1311
18:14:00	961.1	873.1	31.06	19.46	809.9	1313
18:15:00	988	902.3	30.85	19.43	772.9	1296

18:16:00	970.5	896.5	30.65	19.42	737.2	1272
18:17:00	993	902.5	30.58	19.39	715.7	1246
18:18:00	952.5	867.1	30.73	19.36	688.8	1220
18:19:00	929.6	857.6	30.82	19.34	937.6	1217
18:20:00	914.7	839	30.89	19.3	936	1228
18:21:00	879.4	812.8	30.43	19.28	763.1	1216
18:22:00	858.7	795.8	30.28	19.25	693.3	1204
18:23:00	836.5	772.6	30.38	19.23	666	1201
18:24:00	774.5	717.4	29.97	19.2	640.6	1234
18:25:00	751	696.8	30.59	19.18	651.7	1465
18:26:00	796.4	713.1	30.41	19.19	618.4	1282
18:27:00	785.7	722	30.1	19.18	596	1213
18:28:00	774.4	715.2	30.23	19.21	583.4	1190
18:29:00	747.7	683.5	30.48	19.24	572	1173
18:30:00	706.7	658.2	30.46	19.28	552	1170
18:31:00	703.3	642.4	30.46	19.32	546.5	1167
18:32:00	700.1	647.4	30.84	19.38	544.6	1168
18:33:00	679.3	629.5	31.38	19.43	539.3	1179
18:34:00	637	593.1	31.39	19.47	519.7	1184
18:35:00	610	565.6	31.72	19.5	508.8	1188
18:36:00	567.3	534.6	30.31	19.5	647.8	1171
18:37:00	521.7	485.4	30.35	19.52	598.8	1150
18:38:00	504.4	473.2	30.25	19.57	565.9	1153
18:39:00	472.1	442	29.83	19.59	485.7	1136
18:40:00	462.8	424.7	30.29	19.62	456.1	1113
18:41:00	447.9	417.5	30.61	19.68	454.5	1116
18:42:00	429.7	397	30	19.76	442.7	1116
18:43:00	399.2	372.7	30.54	19.82	457.1	1102
18:44:00	404	375.5	30.43	19.88	503	1109
18:45:00	401.7	379.8	30.16	19.92	539.7	1111
18:46:00	400.3	377.8	30.41	19.97	579	1115
18:47:00	403.8	379.1	30.68	20.01	599	1114
18:48:00	370.4	346.8	31.22	20.08	617.8	1119
18:49:00	378.9	360.9	30.7	20.14	627.3	1119
18:50:00	369.9	354.1	31.62	20.17	654.3	1119
18:51:00	377.9	357	31.31	20.22	682.8	1117
18:52:00	397.1	372.9	30.53	20.25	671.8	1091
18:53:00	389.3	365.4	30.56	20.29	662.9	1062
18:54:00	389.5	369.1	30.87	20.36	672.4	1050
18:55:00	408.9	386.8	30.61	20.42	676	1052
18:56:00	409.6	384.9	30.71	20.49	667.8	1049
18:57:00	391.1	371.7	30.75	20.55	653.8	1049
18:58:00	393.3	370.9	31.19	20.59	638	1044
18:59:00	371.4	353.3	31.66	20.64	625.7	1044
19:00:00	349	331.7	31.75	20.71	605	1051

19:01:00	322.7	304.3	31.43	20.77	575.8	1051
19:02:00	319.1	298.1	31.38	20.85	553.4	1042
19:03:00	302.5	283.2	32.02	20.93	539.6	1030
19:04:00	287.8	271.6	32.47	20.98	529.8	1018
19:05:00	276.5	263.9	32.56	21.03	518.2	1003
19:06:00	268.5	255	31.83	21.11	495.6	996
19:07:00	270.3	255.6	30.73	21.17	452.3	977.1
19:08:00	241	228.7	31.16	21.25	426.5	958.3
19:09:00	214.5	204	31	21.31	415.2	955.9
19:10:00	206.3	194.5	31.19	21.36	400.3	962.1
19:11:00	203.3	187.9	31.53	21.44	402.4	975.7
19:12:00	196.8	182.6	31.95	21.5	405	982.3
19:13:00	192.8	182.9	31.86	21.57	402.3	983.8
19:14:00	192.7	183.3	31.37	21.65	387.8	982.2
19:15:00	162.7	156.5	31.45	21.73	369.8	975.5
19:16:00	156	148.4	31.77	21.8	368.1	971.6
19:17:00	151	144.1	32.27	21.88	369.1	970.1
19:18:00	144.9	137.4	32.73	21.96	381.4	971.2
19:19:00	142.3	134.4	32.04	21.99	379.4	968.7
19:20:00	137.5	130.5	31.6	22.01	368.8	949.6
19:21:00	137.5	128.6	30.41	22.02	350	924.5
19:22:00	135	127	31.75	22.03	354	920.4
19:23:00	131.5	121.8	33.02	22.13	377.6	967
19:24:00	135.9	126.1	33.67	22.21	402.2	1064
19:25:00	136.4	127.4	33.12	22.28	395.2	1083
19:26:00	135	126	32.26	22.31	381.4	1043
19:27:00	137	127.9	33.14	22.33	373.3	1006
19:28:00	168.3	159.2	34.61	22.38	486.4	1002
19:29:00	165.2	154.1	34.56	22.46	1141	1009
19:30:00	151.9	142.2	34.28	22.53	914.7	1017
19:31:00	174.6	163.9	35.82	22.59	909.7	1024
19:32:00	192.6	178.1	36.31	22.63	886.3	1032
19:33:00	183.4	171	36.46	22.68	846.8	1043
19:34:00	189.7	178.2	37.63	22.72	812.6	1047
19:35:00	190.4	178.5	39.01	22.77	775.5	1047
19:36:00	198.9	182.7	39.41	22.8	736.2	1055
19:37:00	228.1	204.9	40.38	22.82	725.3	1077
19:38:00	252.4	230	42.06	22.87	711.4	1093
19:39:00	270.5	248.8	44.25	22.89	711.4	1105
19:40:00	284.2	263.8	43.78	22.91	696.2	1111
19:41:00	284.6	259.3	41.51	22.95	672.5	1113
19:42:00	273.1	246.3	40.01	22.98	648.6	1112
19:43:00	277	248.5	39.76	22.98	635.3	1106
19:44:00	265.4	244.4	39.76	23.01	616.7	1109
19:45:00	280.8	252.1	38.91	23.05	599	1127

19:46:00	299.6	269	39.88	23.09	585.7	1137
19:47:00	304.5	274.8	39.37	23.13	587.7	1137
19:48:00	311.9	286.9	39.34	23.16	695.1	1143
19:49:00	313.4	280.7	38.54	23.19	747.5	1156
19:50:00	334.9	310.4	38.13	23.23	799.4	1151
19:51:00	378.4	349.9	38.44	23.28	861.6	1302
19:52:00	374.1	339.1	37.85	23.31	837	1371
19:53:00	379.3	342	36.82	23.33	779.6	1335
19:54:00	371.1	342.8	36.87	23.32	709.5	1268
19:55:00	403.9	384	36.78	23.34	701.4	1175
19:56:00	469.2	433	35.92	23.38	778.9	1163
19:57:00	456.5	420.5	36.15	23.43	790	1162
19:58:00	477.6	445.3	36.42	23.47	823.7	1174
19:59:00	512.4	474.9	36.4	23.5	779.5	1174
20:00:00	521.8	479.9	36.44	23.52	761.5	1177
20:01:00	517.9	476.2	35.66	23.54	740.1	1181
20:02:00	503.9	458.5	36.04	23.55	706.8	1205
20:03:00	544.6	500.4	38.28	23.54	700.4	1227
20:04:00	568	520	37.55	23.51	677.9	1220
20:05:00	547.4	500.6	36.69	23.5	643.5	1203
20:06:00	523.4	486.5	38.63	23.51	630.4	1197
20:07:00	520.3	476.5	39.06	23.52	631	1192
20:08:00	529.5	477	39.79	23.51	695.2	1191
20:09:00	479.8	432.7	37.74	23.5	713.5	1207
20:10:00	460.3	405.1	38.28	23.48	1539	1216
20:11:00	484	419.4	38.54	23.45	1144	1257
20:12:00	447.9	381.5	39.75	23.45	817.7	1308
20:13:00	427.5	375.3	40.78	23.45	1566	1389
20:14:00	455.1	393.9	40.16	23.46	1880	1392
20:15:00	456.1	400.1	40.04	23.47	1136	1352
20:16:00	430.8	380.4	40.29	23.46	849.2	1359
20:17:00	446.5	396.3	39.86	23.44	738.3	1360
20:18:00	454.5	401.4	40.15	23.43	674.5	1332
20:19:00	459.7	397.5	41.5	23.42	877	1358
20:20:00	442.1	392.8	41.74	23.41	1090	1459
20:21:00	446.6	390.1	42.94	23.39	955.9	1512
20:22:00	451.8	389.2	42.04	23.39	803.9	1514
20:23:00	446	383.2	40.88	23.37	736.9	1495
20:24:00	460.5	395.5	40.3	23.35	666.9	1452
20:25:00	462.2	407.5	40.52	23.34	615	1399
20:26:00	476	417.7	41.06	23.32	610.5	1369
20:27:00	479.3	415.9	40.26	23.32	606	1353
20:28:00	448.8	388	41.15	23.32	603.9	1374
20:29:00	446	388.1	40.23	23.32	583.1	1377
20:30:00	473.4	410.3	40.7	23.36	565.6	1360

20:31:00	473.5	415.8	40.36	23.39	565.5	1355
20:32:00	452.3	399.4	41.25	23.38	558	1359
20:33:00	458.3	401.9	41.24	23.37	555.5	1369
20:34:00	441.7	386.4	41.84	23.35	542.7	1386
20:35:00	437.1	379.3	40.92	23.36	522.7	1391
20:36:00	459.1	390.1	42.15	23.38	588.2	1391
20:37:00	453.7	391.5	42.17	23.42	766.2	1370
20:38:00	439.1	382.8	43.17	23.42	768	1352
20:39:00	481.5	417.9	44.78	23.4	797.7	1348
20:40:00	484.4	412.9	43.52	23.41	779.7	1345
20:41:00	464.6	403.2	44.44	23.44	814.4	1341
20:42:00	454	394.6	45.9	23.47	791	1340
20:43:00	477.8	409.1	48.49	23.5	789.5	1352
20:44:00	482.6	414.4	50.42	23.54	770.1	1368
20:45:00	481.8	415.5	51.85	23.59	760.6	1367
20:46:00	499.6	432.4	54.05	23.63	742	1349
20:47:00	490.4	424.5	52.85	23.64	709.9	1330
20:48:00	483.7	417.9	53.66	23.68	688.3	1326
20:49:00	494.7	416	55.28	23.72	668.3	1307
20:50:00	518.5	454.5	57.72	23.77	697.6	1308
20:51:00	556.5	496.9	54.61	23.77	838.4	1307
20:52:00	577.1	511	54	23.8	921.4	1310
20:53:00	557.2	497.1	52.93	23.82	936.8	1316
20:54:00	549.5	481.1	52.99	23.84	928	1318
20:55:00	535.5	464.6	51.19	23.82	920	1320
20:56:00	528	462.8	51.63	23.86	955.9	1321
20:57:00	537.3	465.4	52.16	23.91	992.1	1322
20:58:00	538.5	463.2	52.52	23.96	1012	1322
20:59:00	531	460.9	53.63	24	1056	1319
21:00:00	519.5	449.7	55.19	24.07	1092	1326
21:01:00	516.1	459.5	57.13	24.13	1082	1328
21:02:00	535.3	472.5	58.4	24.2	1031	1313
21:03:00	524.2	453.2	58.52	24.28	990.3	1299
21:04:00	487	434.1	59.75	24.39	990.3	1293
21:05:00	496.1	443.2	59.15	24.54	1056	1314
21:06:00	506.7	449.9	59.02	24.65	1056	1331
21:07:00	566.1	504.6	59.84	24.72	1046	1334
21:08:00	563.3	511.3	58.75	24.76	1021	1335
21:09:00	548.6	500.5	57.32	24.8	978.4	1334
21:10:00	557.5	503	56.96	24.83	938.4	1335
21:11:00	582.1	525.2	56.38	24.85	916.5	1336
21:12:00	592.4	534.6	55.92	24.86	902.7	1333
21:13:00	589.9	537.7	55.57	24.87	893.3	1332
21:14:00	593.6	527.6	54.24	24.87	892.2	1332
21:15:00	529.8	476.5	53.1	24.86	889.8	1332

21:16:00	529.6	480.8	51.72	24.86	878.8	1327
21:17:00	566.8	507.6	50.83	24.86	845.8	1319
21:18:00	563.3	502.6	49.1	24.86	793.3	1292
21:19:00	539.7	476.5	48.38	24.84	776.5	1268
21:20:00	528.6	477.2	49.19	24.85	825.2	1257
21:21:00	528.5	476.3	49.18	24.85	902.3	1249
21:22:00	530.2	467.1	48.63	24.85	962.2	1241
21:23:00	544	473.8	47.83	24.84	952.5	1225
21:24:00	509.1	448.6	45.58	24.79	873	1198
21:25:00	477.9	428.4	45.22	24.74	824.7	1174
21:26:00	512.2	448.2	44.6	24.72	782	1156
21:27:00	505.9	440.8	43.84	24.7	751.4	1141
21:28:00	491.3	432.7	42.41	24.68	733.9	1120
21:29:00	462	410.6	41.62	24.65	729.6	1101
21:30:00	438.3	394.9	41.61	24.63	718.7	1075
21:31:00	437.3	383.8	42.32	24.63	721.4	1065
21:32:00	435.1	390.2	40.92	24.64	671.9	1064
21:33:00	398.7	356.9	39.95	24.63	631.5	1044
21:34:00	399.7	363.7	40.04	24.61	604	1020
21:35:00	436.3	388.9	42.25	24.59	681.7	1019
21:36:00	416.6	369.2	41.55	24.6	743.3	1018
21:37:00	408.4	366.8	41.84	24.57	760.4	1016
21:38:00	399.6	356.7	41.32	24.56	729.7	1013
21:39:00	409.3	371.8	41.5	24.56	684.1	1007
21:40:00	398.3	356.9	41.46	24.56	649.9	999.9
21:41:00	389.5	348.7	40.43	24.54	627.7	993.5
21:42:00	351.1	321.5	38.32	24.51	615.4	966.9
21:43:00	336.5	300.8	38.03	24.46	608.6	937.1
21:44:00	331.1	299.7	37.71	24.41	585.3	921.1
21:45:00	345.2	309.5	39.57	24.41	599.9	914
21:46:00	349.4	312.9	39.55	24.41	610.6	913.4
21:47:00	348.5	310.9	39.02	24.41	616.5	919.7
21:48:00	346.1	312.5	38.54	24.38	595.3	925.3
21:49:00	339.5	300.3	38.49	24.36	579.7	925.2
21:50:00	322.1	290	37.69	24.32	565.9	922.1
21:51:00	306.1	277.4	37.61	24.29	546.8	908.4
21:52:00	319	287.9	36.48	24.26	514.1	895
21:53:00	314.6	282.9	36.63	24.22	489.6	883.5
21:54:00	324.8	295	36.8	24.19	468.3	880.8
21:55:00	289.5	262.2	33.65	24.12	411.3	857.4
21:56:00	188.3	171.6	32.86	23.96	361.8	805.4
21:57:00	253.4	228.2	35.13	23.82	354.1	786.7
21:58:00	295.1	271.8	35.41	23.84	366.1	804.3
21:59:00	316.7	287.1	37.03	23.84	369.4	823.6
22:00:00	349.7	312.2	36.88	23.89	370.2	842.9

22:01:00	329.7	291.6	35.66	23.92	364.8	848.3
22:02:00	287.8	257.8	34.78	23.93	347.1	841.6
22:03:00	250	224.9	34.43	23.93	338.8	827.1
22:04:00	296.2	268.9	37.28	23.96	395.5	847.5
22:05:00	306.6	278.3	36.08	24	565.2	882
22:06:00	300.4	275.5	35.67	23.98	583.6	888.1
22:07:00	289.1	262.8	35.22	23.97	548.3	886.8
22:08:00	273.4	241.9	34.91	23.95	508.3	887.9
22:09:00	275.9	247.4	34.78	23.93	482.4	891.4
22:10:00	284.7	257.3	34.8	23.92	465.7	899.1
22:11:00	290.8	261.6	35.23	23.92	463.4	906.6
22:12:00	295.3	263.9	35.59	23.92	473.9	910.7
22:13:00	336	292.3	37.41	23.96	491.3	914.9
22:14:00	308.6	274.8	36.85	24.02	497.1	925.8
22:15:00	338.4	304.6	38.13	24.07	503.4	932
22:16:00	332.1	298.2	36.88	24.06	500.1	929.9
22:17:00	337.3	308.6	38.2	24.09	500.4	929.6
22:18:00	369.1	331.4	38.76	24.1	509	933.7
22:19:00	345.8	312.6	38.41	24.1	533.4	945.9
22:20:00	342.2	309.4	37.91	24.11	557.7	961.2
22:21:00	357.5	322	37.66	24.12	570.3	964.6
22:22:00	399.4	359.2	38.45	24.12	580.5	972
22:23:00	352.6	318.6	38.34	24.11	583.3	977.9
22:24:00	370.5	330.2	38.93	24.11	592	986.9
22:25:00	344.4	309.2	38.63	24.09	599.9	987.9
22:26:00	368.4	328.3	39.81	24.09	621.8	993.8
22:27:00	386	345.7	40.05	24.1	693.7	1010
22:28:00	386.7	344.3	40.05	24.14	742	1035
22:29:00	359.1	326.9	39.37	24.17	776.6	1048
22:30:00	384.9	345.5	39.69	24.16	797.6	1050
22:31:00	403.6	354	40.47	24.15	800.3	1054
22:32:00	405	359.2	40.41	24.12	794	1064
22:33:00	399	361.6	40.24	24.09	763.3	1068
22:34:00	394.1	357.5	40.01	24.06	797.4	1073
22:35:00	394.8	353.6	39.73	24.01	847.1	1069
22:36:00	389	346.8	39.36	23.98	826.3	1058
22:37:00	400.8	359	39.21	23.93	805.2	1049
22:38:00	363.3	325.4	38.9	23.89	745	1040
22:39:00	362	327.3	40.07	23.89	722.9	1047
22:40:00	388.7	346.1	40.39	23.88	692.5	1057
22:41:00	409.1	356.6	40.14	23.86	656.9	1064
22:42:00	421.2	371.6	40.22	23.85	628.2	1072
22:43:00	406.9	362.8	42.03	23.83	631	1074
22:44:00	406.6	359.3	41.37	23.8	614.9	1078
22:45:00	433.6	382.8	42.11	23.78	595.6	1091

22:46:00	443.3	396.7	43.11	23.77	591.4	1115
22:47:00	435.7	383.4	41.42	23.73	565.5	1128
22:48:00	419.2	374.6	41.72	23.7	547.7	1121
22:49:00	415.8	368.3	42.2	23.7	538	1116
22:50:00	440.9	392.2	43.21	23.7	536.7	1121
22:51:00	427.6	380.5	41.03	23.66	518.2	1114
22:52:00	381.4	340.8	40.4	23.62	494	1095
22:53:00	387.2	344.1	41.09	23.59	488.9	1088
22:54:00	367.5	325.7	40.28	23.55	478.2	1090
22:55:00	373.3	324.7	39.25	23.49	463.1	1091
22:56:00	377.1	333	41.15	23.44	460.4	1101
22:57:00	405.8	370.3	41.29	23.46	585.5	1128
22:58:00	419.7	371.7	41.43	23.44	657.5	1141
22:59:00	409.4	365.5	39.85	23.4	754.8	1137
23:00:00	391.4	347.8	39.46	23.38	803.5	1115
23:01:00	406.2	358.7	40.2	23.34	812.5	1097
23:02:00	392.5	349.5	39.59	23.32	764.6	1108
23:03:00	417.3	365.8	41.44	23.32	762.4	1124
23:04:00	415.1	373.9	41.12	23.3	772.8	1137
23:05:00	400.9	354.4	39.94	23.29	750.5	1179
23:06:00	404.3	354.9	40.35	23.27	709.4	1193
23:07:00	376.2	332.5	39.35	23.26	677.8	1174
23:08:00	381.1	337.5	38.75	23.23	654.4	1182
23:09:00	360.4	326.6	39.15	23.19	887	1232
23:10:00	366.5	335.4	38.38	23.15	1124	1339
23:11:00	373.7	331.6	38.1	23.1	981.6	1317
23:12:00	369.2	329	37.77	23.06	843.8	1306
23:13:00	359.4	323.8	38.86	23.02	810.7	1596
23:14:00	359.7	324.5	38.4	22.98	793.5	1594
23:15:00	364.9	329.1	38.31	22.95	852	1612
23:16:00	365.7	334	38.61	22.9	813.6	1523
23:17:00	380.9	337.7	38.24	22.87	781.5	1522
23:18:00	393.3	346.8	38.24	22.82	731.8	1321
23:19:00	418.9	370.5	38.75	22.81	723.9	1233
23:20:00	427.6	387.3	38.42	22.78	715.5	1207
23:21:00	420.8	383.3	38.38	22.75	734.2	1167
23:22:00	437.2	381.4	38.9	22.69	756	1131
23:23:00	467.2	400.4	40.7	22.65	739.9	1095
23:24:00	437.7	390.2	38.59	22.63	726.2	1087
23:25:00	436.3	396.5	38.96	22.6	707.5	1072
23:26:00	407.5	373.8	37.81	22.6	706.7	1064
23:27:00	394.5	358.2	37.85	22.57	691.6	1049
23:28:00	373.1	334.4	36.88	22.57	670.5	1044
23:29:00	381.8	335.5	37.72	22.57	660.3	1048
23:30:00	393	350.2	37.08	22.55	641	1057

23:31:00	382.7	340.5	36.18	22.47	613.3	1053
23:32:00	368.6	328.9	36.21	22.4	603.9	1044
23:33:00	375	336	36.33	22.37	595.7	1033
23:34:00	378.9	335.6	36.11	22.35	577.9	1025
23:35:00	394.9	356.7	36.58	22.3	577	1019
23:36:00	409	363	35.95	22.23	549	1022
23:37:00	427.1	376.1	35.88	22.18	529.9	1025
23:38:00	410.4	364.9	35.69	22.12	515.7	1027
23:39:00	412.2	362.2	35.49	22.06	509.4	1030
23:40:00	400.5	360.4	35.23	22	520.8	1032
23:41:00	385.6	346.9	35.07	21.94	525.2	1029
23:42:00	390.1	345.7	35.24	21.9	527.8	1028
23:43:00	375.6	334.7	35.28	21.86	523.2	1028
23:44:00	390	351.1	35.99	21.83	515.7	1025
23:45:00	415.7	365	36.39	21.8	511.8	1029
23:46:00	410.1	366	37.26	21.77	517	1029
23:47:00	396.7	354.2	36.59	21.74	520	1030
23:48:00	392.5	352.2	36.03	21.75	510.9	1054
23:49:00	390.5	355.9	36.57	21.73	507.4	1062
23:50:00	416	371.2	36.84	21.69	512.9	1073
23:51:00	424.5	379.1	37.56	21.63	567.3	1078
23:52:00	396.2	355.5	36.42	21.6	1314	1078
23:53:00	391.7	348.2	36.14	21.55	1238	1093
23:54:00	388.8	344.2	36.32	21.49	944.1	1097
23:55:00	382.1	345.7	36.38	21.42	788.5	1087
23:56:00	377.6	337.6	37.02	21.37	703.6	1073
23:57:00	384.5	349.8	37.38	21.33	685.9	1071
23:58:00	386.8	345	35.94	21.27	657.8	1073
23:59:00	369.8	334.4	35.3	21.2	632.8	1078

Figure 32 The average ambient measurements